



ELECTRONIC COPY

LG776672237
Report verification at igi.org



April 30, 2026

IGI Report Number **LG776672237**

Description **LABORATORY GROWN DIAMOND**

Shape and Cutting Style **CUT CORNERED
RECTANGULAR MODIFIED
BRILLIANT**

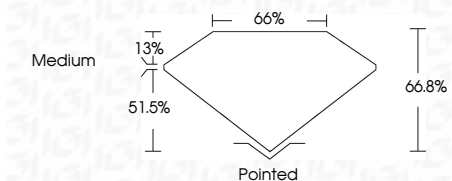
Measurements **12.16 X 8.61 X 5.75 MM**

GRADING RESULTS

Carat Weight **5.10 CARATS**

Color Grade **FANCY VIVID PINK**

Clarity Grade **VS 1**



ADDITIONAL GRADING INFORMATION

Polish **EXCELLENT**

Symmetry **EXCELLENT**

Fluorescence **SLIGHT**

Inscription(s) **IGI LG776672237**

Comments: This Laboratory Grown Diamond was created by Chemical Vapor Deposition (CVD) growth process. Indications of post-growth treatment.



IGI

LABORATORY GROWN DIAMOND REPORT

April 30, 2026

IGI Report Number **LG776672237**

Description **LABORATORY GROWN DIAMOND**

Shape and Cutting Style **CUT CORNERED RECTANGULAR
MODIFIED BRILLIANT**

Measurements **12.16 X 8.61 X 5.75 MM**

GRADING RESULTS

Carat Weight **5.10 CARATS**

Color Grade **FANCY VIVID PINK**

Clarity Grade **VS 1**

ADDITIONAL GRADING INFORMATION

Polish **EXCELLENT**

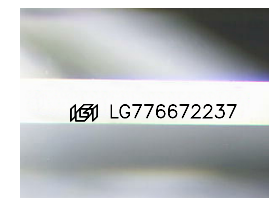
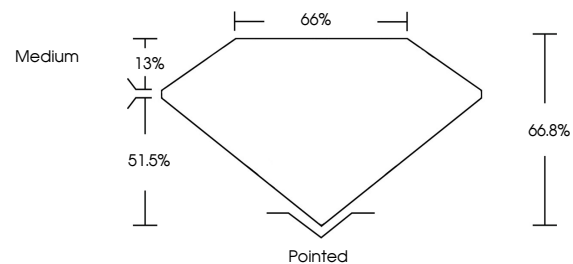
Symmetry **EXCELLENT**

Fluorescence **SLIGHT**

Inscription(s) **IGI LG776672237**

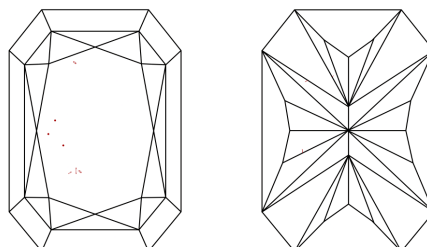
Comments: This Laboratory Grown Diamond was created by Chemical Vapor Deposition (CVD) growth process. Indications of post-growth treatment.

PROPORTIONS



Sample Image Used

CLARITY CHARACTERISTICS



KEY TO SYMBOLS

Red symbols indicate internal characteristics.
Green symbols indicate external characteristics.

COLOR

D E F G H I J Faint Very Light Light

CLARITY

FL	IF	VS ¹⁻²	VS ¹⁻²	SI ¹⁻²	I ¹⁻³
Flawless	Internally Flawless	Very Very Slightly Included	Very Slightly Included	Slightly Included	Included

April 30, 2026
IGI Report No LG776672237
CUT CORNERED RECT. MODIFIED BRILLIANT
12.16 X 8.61 X 5.75 MM
5.10 CARATS
FANCY VIVID PINK
VS 1
66.8%
51.5%
Medium
Pointed
EXCELLENT
EXCELLENT
SLIGHT
IGI LG776672237

Comments: This Laboratory Grown Diamond was created by Chemical Vapor Deposition (CVD) growth process. Indications of post-growth treatment.