



**ELECTRONIC COPY**

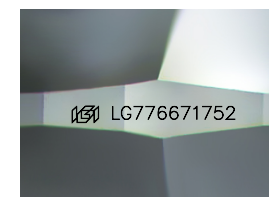
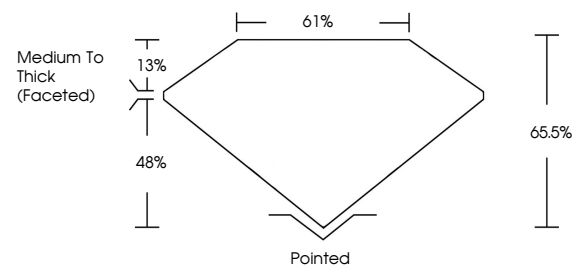
LG776671752  
Report verification at igi.org



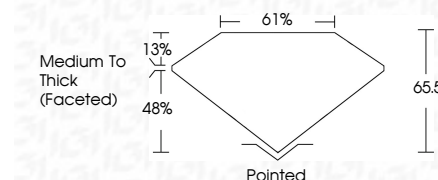
March 17, 2026  
IGI Report Number **LG776671752**  
Description **LABORATORY GROWN DIAMOND**  
Shape and Cutting Style **SQUARE CUSHION MODIFIED BRILLIANT**  
Measurements **7.27 X 7.21 X 4.72 MM**  
**GRADING RESULTS**  
Carat Weight **2.08 CARATS**  
Color Grade **G**  
Clarity Grade **VVS 1**

March 17, 2026  
IGI Report Number **LG776671752**  
Description **LABORATORY GROWN DIAMOND**  
Shape and Cutting Style **SQUARE CUSHION MODIFIED BRILLIANT**  
Measurements **7.27 X 7.21 X 4.72 MM**  
**GRADING RESULTS**  
Carat Weight **2.08 CARATS**  
Color Grade **G**  
Clarity Grade **VVS 1**

**PROPORTIONS**



Sample Image Used



**ADDITIONAL GRADING INFORMATION**

Polish **EXCELLENT**  
Symmetry **EXCELLENT**  
Fluorescence **NONE**  
Inscription(s) **IGI LG776671752**

Comments: This Laboratory Grown Diamond was created by Chemical Vapor Deposition (CVD) growth process.  
Type IIa

**ADDITIONAL GRADING INFORMATION**

Polish **EXCELLENT**  
Symmetry **EXCELLENT**  
Fluorescence **NONE**  
Inscription(s) **IGI LG776671752**  
Comments: This Laboratory Grown Diamond was created by Chemical Vapor Deposition (CVD) growth process.  
Type IIa

**COLOR**

D E F G H I J Faint Very Light Light

**CLARITY**

FL	IF	VVS <sup>1-2</sup>	VS <sup>1-2</sup>	SI <sup>1-2</sup>	I <sup>1-3</sup>
Flawless	Internally Flawless	Very Very Slightly Included	Very Slightly Included	Slightly Included	Included



**IGI**



March 17, 2026  
IGI Report No **LG776671752**  
**SQUARE CUSHION MODIFIED BRILLIANT**  
**7.27 X 7.21 X 4.72 MM**  
Carat Weight **2.08 CARATS**  
Color Grade **G**  
Clarity Grade **VVS 1**  
Depth **65.5%**  
Table **61%**  
Girdle **Medium To Thick (Faceted)**  
Culet **Pointed**  
Polish **EXCELLENT**  
Symmetry **EXCELLENT**  
Fluorescence **NONE**  
Inscription(s) **IGI LG776671752**  
Comments: This Laboratory Grown Diamond was created by Chemical Vapor Deposition (CVD) growth process.  
Type IIa