



February 25, 2026
IGI Report Number LG776670131
ROUND BRILLIANT
LABORATORY GROWN DIAMOND
4.82 - 4.86 X 3.04 MM
0.44 CARAT
D
VVS 2
EXCELLENT
EXCELLENT
EXCELLENT
NONE
Inscription(s) IGI LG776670131
 Comments: This Laboratory Grown Diamond was created by Chemical Vapor Deposition (CVD) growth process. Type IIa

LABORATORY GROWN DIAMOND REPORT

February 25, 2026
 IGI Report Number **LG776670131**
 Description **LABORATORY GROWN DIAMOND**
 Shape and Cutting Style **ROUND BRILLIANT**
 Measurements **4.82 - 4.86 X 3.04 MM**

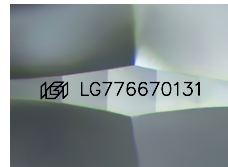
GRADING RESULTS

Carat Weight **0.44 CARAT**
 Color Grade **D**
 Clarity Grade **VVS 2**
 Cut Grade **EXCELLENT**

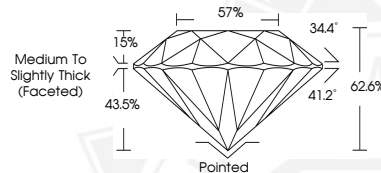
ADDITIONAL GRADING INFORMATION

Polish **EXCELLENT**
 Symmetry **EXCELLENT**
 Fluorescence **NONE**
 Inscription(s) **IGI LG776670131**

Comments: This Laboratory Grown Diamond was created by Chemical Vapor Deposition (CVD) growth process. Type IIa



Sample Image Used



February 25, 2026
IGI Report Number LG776670131
ROUND BRILLIANT
LABORATORY GROWN DIAMOND
4.82 - 4.86 X 3.04 MM
0.44 CARAT
D
VVS 2
EXCELLENT
EXCELLENT
EXCELLENT
NONE
Inscription(s) IGI LG776670131
 Comments: This Laboratory Grown Diamond was created by Chemical Vapor Deposition (CVD) growth process. Type IIa

THIS DOCUMENT WAS PRODUCED WITH THE FOLLOWING SECURITY MEASURES: SPECIAL DOCUMENT PAPER, INK SCREENS, WATERMARK, BACKGROUND DESIGNS, HOLOGRAM AND OTHER SECURITY FEATURES NOT LISTED AND DO EXCEED DOCUMENT SECURITY INDUSTRY GUIDELINES.