



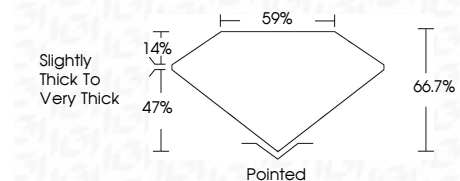
**ELECTRONIC COPY**

LG776668990  
Report verification at igi.org



February 20, 2026  
IGI Report Number **LG776668990**  
Description **LABORATORY GROWN DIAMOND**  
Shape and Cutting Style **OCTAGONAL BRILLIANT**  
Measurements **7.98 X 7.98 X 5.32 MM**

**GRADING RESULTS**  
Carat Weight **2.38 CARATS**  
Color Grade **D**  
Clarity Grade **VVS 2**



**ADDITIONAL GRADING INFORMATION**  
Polish **EXCELLENT**  
Symmetry **EXCELLENT**  
Fluorescence **NONE**  
Inscription(s) **IGI LG776668990**  
Comments: This Laboratory Grown Diamond was created by Chemical Vapor Deposition (CVD) growth process. Type IIa



February 20, 2026  
IGI Report No **LG776668990**  
**OCTAGONAL BRILLIANT**  
7.98 X 7.98 X 5.32 MM  
2.38 CARATS  
D  
VVS 2  
66.7%  
47%  
Slightly Thick To Very Thick  
Pointed  
EXCELLENT  
EXCELLENT  
NONE  
IGI LG776668990  
Comments: This Laboratory Grown Diamond was created by Chemical Vapor Deposition (CVD) growth process. Type IIa

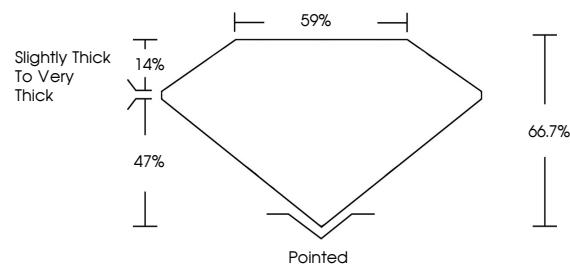
**LABORATORY GROWN DIAMOND REPORT**

February 20, 2026  
IGI Report Number **LG776668990**  
Description **LABORATORY GROWN DIAMOND**  
Shape and Cutting Style **OCTAGONAL BRILLIANT**  
Measurements **7.98 X 7.98 X 5.32 MM**

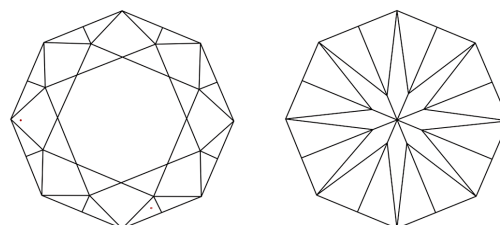
**GRADING RESULTS**  
Carat Weight **2.38 CARATS**  
Color Grade **D**  
Clarity Grade **VVS 2**

**ADDITIONAL GRADING INFORMATION**  
Polish **EXCELLENT**  
Symmetry **EXCELLENT**  
Fluorescence **NONE**  
Inscription(s) **IGI LG776668990**  
Comments: This Laboratory Grown Diamond was created by Chemical Vapor Deposition (CVD) growth process. Type IIa

**PROPORTIONS**

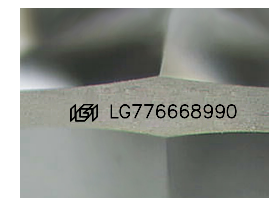


**CLARITY CHARACTERISTICS**



**KEY TO SYMBOLS**

Red symbols indicate internal characteristics.  
Green symbols indicate external characteristics.



Sample Image Used

**COLOR**

D E F G H I J Faint Very Light Light

**CLARITY**

FL	IF	VVS <sup>1-2</sup>	VS <sup>1-2</sup>	SI <sup>1-2</sup>	I <sup>1-3</sup>
Flawless	Internally Flawless	Very Very Slightly Included	Very Slightly Included	Slightly Included	Included

