



ELECTRONIC COPY

LG776657613
Report verification at igi.org



February 26, 2026
IGI Report Number **LG776657613**
Description **LABORATORY GROWN DIAMOND**
Shape and Cutting Style **CUSHION MODIFIED BRILLIANT**
Measurements **7.92 X 5.68 X 3.76 MM**
GRADING RESULTS
Carat Weight **1.50 CARAT**
Color Grade **FANCY INTENSE BROWNISH ORANGE**
Clarity Grade **VS 1**

LABORATORY GROWN DIAMOND REPORT

February 26, 2026
IGI Report Number **LG776657613**
Description **LABORATORY GROWN DIAMOND**
Shape and Cutting Style **CUSHION MODIFIED BRILLIANT**
Measurements **7.92 X 5.68 X 3.76 MM**

GRADING RESULTS

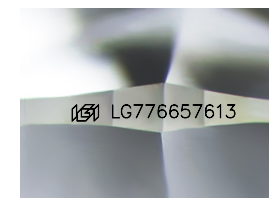
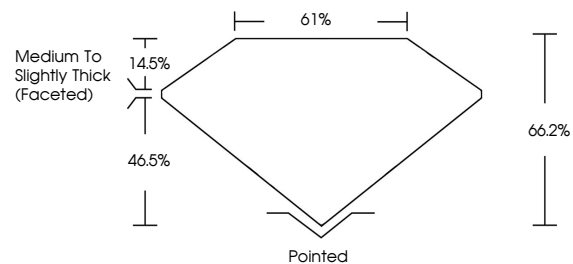
Carat Weight **1.50 CARAT**
Color Grade **FANCY INTENSE BROWNISH ORANGE**
Clarity Grade **VS 1**

ADDITIONAL GRADING INFORMATION

Polish **VERY GOOD**
Symmetry **EXCELLENT**
Fluorescence **SLIGHT**
Inscription(s) **IGI LG776657613**

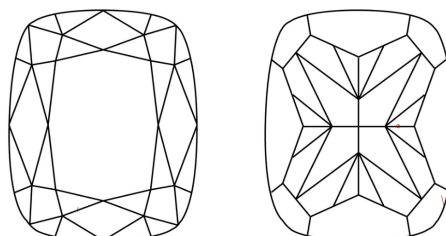
Comments: This Laboratory Grown Diamond was created by Chemical Vapor Deposition (CVD) growth process. Indications of post-growth treatment.

PROPORTIONS



Sample Image Used

CLARITY CHARACTERISTICS



KEY TO SYMBOLS

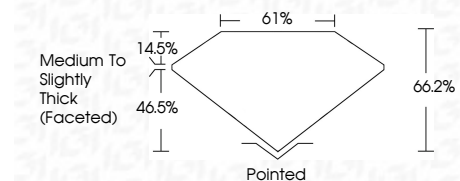
Red symbols indicate internal characteristics.
Green symbols indicate external characteristics.

COLOR

D E F G H I J Faint Very Light Light

CLARITY

FL	IF	VS ¹⁻²	VS ¹⁻²	SI ¹⁻²	I ¹⁻³
Flawless	Internally Flawless	Very Very Slightly Included	Very Slightly Included	Slightly Included	Included



ADDITIONAL GRADING INFORMATION

Polish **VERY GOOD**
Symmetry **EXCELLENT**
Fluorescence **SLIGHT**
Inscription(s) **IGI LG776657613**
Comments: This Laboratory Grown Diamond was created by Chemical Vapor Deposition (CVD) growth process. Indications of post-growth treatment.



February 26, 2026
IGI Report No **LG776657613**
CUSHION MODIFIED BRILLIANT
1.50 CARAT
Carat Weight
Color Grade **FANCY INTENSE BROWNISH ORANGE**
Clarity Grade **VS 1**
Table **66.2%**
Girdle **61%**
Medium to Slightly Thick (Faceted)
Culet **Pointed**
Polish **VERY GOOD**
Symmetry **EXCELLENT**
Fluorescence **SLIGHT**
Inscription(s) **IGI LG776657613**
Comments: This Laboratory Grown Diamond was created by Chemical Vapor Deposition (CVD) growth process. Indications of post-growth treatment.