



ELECTRONIC COPY

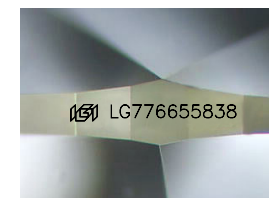
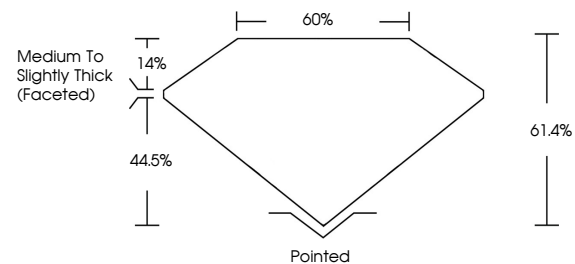
LG776655838
Report verification at igi.org



February 26, 2026
IGI Report Number **LG776655838**
Description **LABORATORY GROWN DIAMOND**
Shape and Cutting Style **PEAR BRILLIANT**
Measurements **13.25 X 8.65 X 5.31 MM**
GRADING RESULTS
Carat Weight **3.56 CARATS**
Color Grade **E**
Clarity Grade **VVS 2**

February 26, 2026
IGI Report Number **LG776655838**
Description **LABORATORY GROWN DIAMOND**
Shape and Cutting Style **PEAR BRILLIANT**
Measurements **13.25 X 8.65 X 5.31 MM**

PROPORTIONS

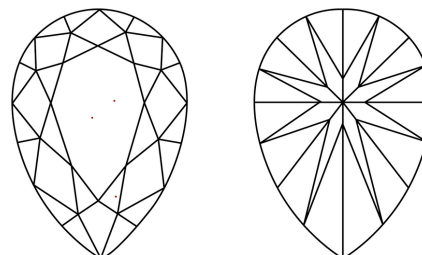


Sample Image Used

GRADING RESULTS

Carat Weight **3.56 CARATS**
Color Grade **E**
Clarity Grade **VVS 2**

CLARITY CHARACTERISTICS



KEY TO SYMBOLS

Red symbols indicate internal characteristics.
Green symbols indicate external characteristics.

ADDITIONAL GRADING INFORMATION

Polish **EXCELLENT**
Symmetry **EXCELLENT**
Fluorescence **NONE**
Inscription(s) **IGI LG776655838**

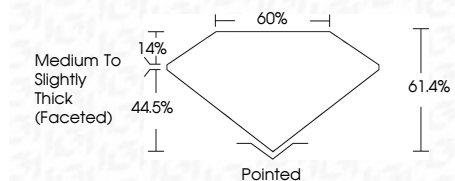
Comments: This Laboratory Grown Diamond was created by Chemical Vapor Deposition (CVD) growth process. Type IIa

COLOR

D E F G H I J Faint Very Light Light

CLARITY

FL	IF	VVS ¹⁻²	VS ¹⁻²	SI ¹⁻²	I ¹⁻³
Flawless	Internally Flawless	Very Very Slightly Included	Very Slightly Included	Slightly Included	Included



ADDITIONAL GRADING INFORMATION

Polish **EXCELLENT**
Symmetry **EXCELLENT**
Fluorescence **NONE**
Inscription(s) **IGI LG776655838**
Comments: This Laboratory Grown Diamond was created by Chemical Vapor Deposition (CVD) growth process. Type IIa



February 26, 2026
IGI Report No LG776655838
PEAR BRILLIANT
13.25 X 8.65 X 5.31 MM
3.56 CARATS
E
VVS 2
61.4%
44.5%
60%
Medium to Slightly Thick (Faceted)
Pointed
EXCELLENT
EXCELLENT
NONE
IGI LG776655838
Comments: This Laboratory Grown Diamond was created by Chemical Vapor Deposition (CVD) growth process. Type IIa