



ELECTRONIC COPY

LG776655670
Report verification at igi.org



February 27, 2026
IGI Report Number **LG776655670**
Description **LABORATORY GROWN DIAMOND**
Shape and Cutting Style **SQUARE CUSHION MODIFIED BRILLIANT**
Measurements **6.96 X 6.94 X 4.74 MM**
GRADING RESULTS
Carat Weight **2.08 CARATS**
Color Grade **FANCY YELLOW**
Clarity Grade **VS 1**

February 27, 2026
IGI Report Number **LG776655670**
Description **LABORATORY GROWN DIAMOND**
Shape and Cutting Style **SQUARE CUSHION MODIFIED BRILLIANT**
Measurements **6.96 X 6.94 X 4.74 MM**

GRADING RESULTS

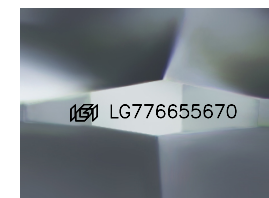
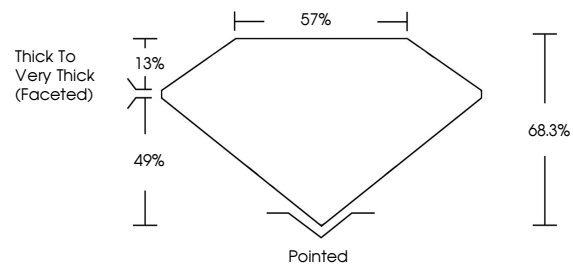
Carat Weight **2.08 CARATS**
Color Grade **FANCY YELLOW**
Clarity Grade **VS 1**

ADDITIONAL GRADING INFORMATION

Polish **EXCELLENT**
Symmetry **EXCELLENT**
Fluorescence **NONE**
Inscription(s) **IGI LG776655670**

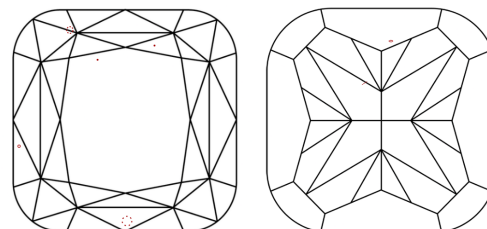
Comments: This Laboratory Grown Diamond was created by Chemical Vapor Deposition (CVD) growth process.

PROPORTIONS



Sample Image Used

CLARITY CHARACTERISTICS



KEY TO SYMBOLS

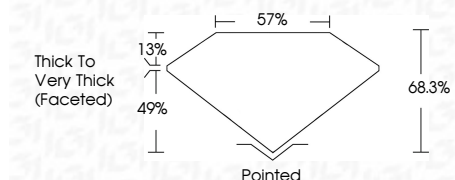
Red symbols indicate internal characteristics.
Green symbols indicate external characteristics.

COLOR

D E F G H I J Faint Very Light Light

CLARITY

FL	IF	VS ¹⁻²	VS ¹⁻²	SI ¹⁻²	I ¹⁻³
Flawless	Internally Flawless	Very Very Slightly Included	Very Slightly Included	Slightly Included	Included



ADDITIONAL GRADING INFORMATION

Polish **EXCELLENT**
Symmetry **EXCELLENT**
Fluorescence **NONE**
Inscription(s) **IGI LG776655670**
Comments: This Laboratory Grown Diamond was created by Chemical Vapor Deposition (CVD) growth process.



February 27, 2026
IGI Report No LG776655670
SQUARE CUSHION MODIFIED BRILLIANT
2.08 CARATS
FANCY YELLOW
VS 1
6.96 X 6.94 X 4.74 MM
68.3%
49%
13%
Thick to Very Thick (Faceted)
Pointed
EXCELLENT
EXCELLENT
NONE
IGI LG776655670
Comments: This Laboratory Grown Diamond was created by Chemical Vapor Deposition (CVD) growth process.