



ELECTRONIC COPY

LABORATORY GROWN DIAMOND REPORT

February 27, 2026
IGI Report Number LG776655612
Description LABORATORY GROWN DIAMOND
Shape and Cutting Style CUT CORNERED RECTANGULAR MODIFIED BRILLIANT
Measurements 8.73 X 6.10 X 4.17 MM

GRADING RESULTS

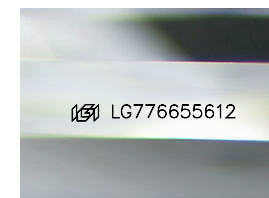
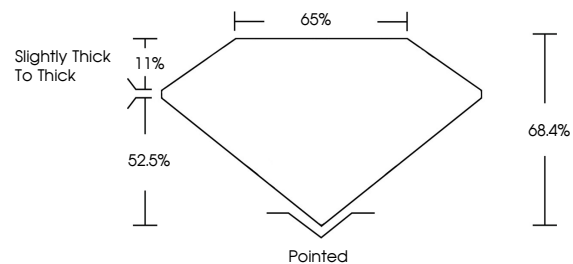
Carat Weight 2.10 CARATS
Color Grade FANCY VIVID PINK
Clarity Grade VVS 2

ADDITIONAL GRADING INFORMATION

Polish EXCELLENT
Symmetry EXCELLENT
Fluorescence STRONG
Inscription(s) LG776655612

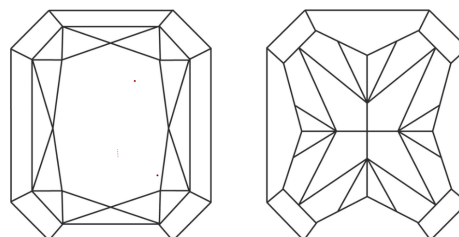
Comments: This Laboratory Grown Diamond was created by Chemical Vapor Deposition (CVD) growth process. Indications of post-growth treatment.

PROPORTIONS



Sample Image Used

CLARITY CHARACTERISTICS



KEY TO SYMBOLS

Red symbols indicate internal characteristics.
Green symbols indicate external characteristics.

COLOR

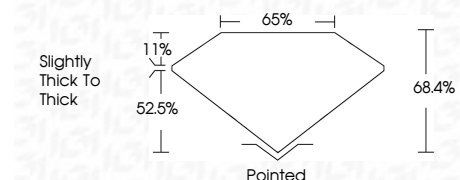
D E F G H I J Faint Very Light Light

CLARITY

FL IF VVS¹⁻² VS¹⁻² SI¹⁻² I¹⁻³
Flawless Internally Flawless Very Very Slightly Included Very Slightly Included Slightly Included Included



February 27, 2026
IGI Report Number LG776655612
Description LABORATORY GROWN DIAMOND
Shape and Cutting Style CUT CORNERED RECTANGULAR MODIFIED BRILLIANT
Measurements 8.73 X 6.10 X 4.17 MM
GRADING RESULTS
Carat Weight 2.10 CARATS
Color Grade FANCY VIVID PINK
Clarity Grade VVS 2



ADDITIONAL GRADING INFORMATION

Polish EXCELLENT
Symmetry EXCELLENT
Fluorescence STRONG
Inscription(s) LG776655612
Comments: This Laboratory Grown Diamond was created by Chemical Vapor Deposition (CVD) growth process. Indications of post-growth treatment.



February 27, 2026
IGI Report No LG776655612
CUT CORNERED RECT. MODIFIED BRILLIANT
8.73 X 6.10 X 4.17 MM
2.10 CARATS
FANCY VIVID PINK
VVS 2
68.4%
65%
Slightly thick to thick
Pointed
EXCELLENT
EXCELLENT
STRONG
IGI LG776655612
Comments: This Laboratory Grown Diamond was created by Chemical Vapor Deposition (CVD) growth process. Indications of post-growth treatment.