



ELECTRONIC COPY

LG776655366
Report verification at igi.org



February 25, 2026
IGI Report Number **LG776655366**
Description **LABORATORY GROWN DIAMOND**
Shape and Cutting Style **PRINCESS CUT**
Measurements **5.46 X 5.33 X 3.79 MM**
GRADING RESULTS
Carat Weight **1.02 CARAT**
Color Grade **FANCY LIGHT YELLOW**
Clarity Grade **SI 1**

February 25, 2026
IGI Report Number **LG776655366**
Description **LABORATORY GROWN DIAMOND**
Shape and Cutting Style **PRINCESS CUT**
Measurements **5.46 X 5.33 X 3.79 MM**

GRADING RESULTS

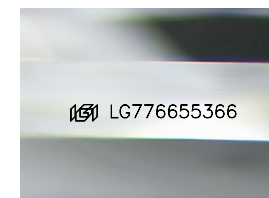
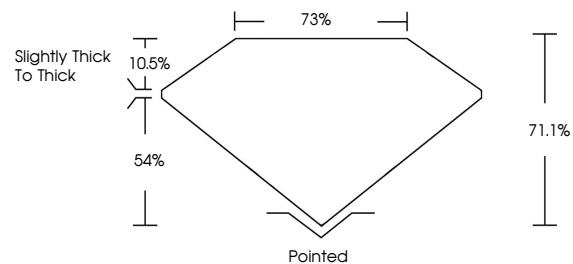
Carat Weight **1.02 CARAT**
Color Grade **FANCY LIGHT YELLOW**
Clarity Grade **SI 1**

ADDITIONAL GRADING INFORMATION

Polish **EXCELLENT**
Symmetry **VERY GOOD**
Fluorescence **NONE**
Inscription(s) **IGI LG776655366**

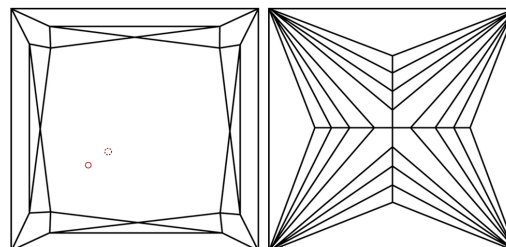
Comments: This Laboratory Grown Diamond was created by Chemical Vapor Deposition (CVD) growth process.

PROPORTIONS



Sample Image Used

CLARITY CHARACTERISTICS



KEY TO SYMBOLS

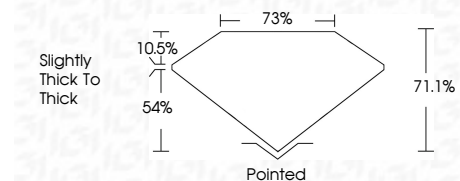
Red symbols indicate internal characteristics.
Green symbols indicate external characteristics.

COLOR

D E F G H I J Faint Very Light Light

CLARITY

FL	IF	VS ¹⁻²	VS ¹⁻²	SI ¹⁻²	I ¹⁻³
Flawless	Internally Flawless	Very Very Slightly Included	Very Slightly Included	Slightly Included	Included



ADDITIONAL GRADING INFORMATION

Polish **EXCELLENT**
Symmetry **VERY GOOD**
Fluorescence **NONE**
Inscription(s) **IGI LG776655366**
Comments: This Laboratory Grown Diamond was created by Chemical Vapor Deposition (CVD) growth process.



February 25, 2026
IGI Report No LG776655366
PRINCESS CUT
1.02 CARAT
5.46 X 5.33 X 3.79 MM
Carat Weight
Color Grade **FANCY LIGHT YELLOW**
Clarity Grade **SI 1**
Depth **71.1%**
Table **73%**
Girdle **Slightly thick to thick**
Culet **Pointed**
Polish **EXCELLENT**
Symmetry **VERY GOOD**
Fluorescence **NONE**
Inscription(s) **IGI LG776655366**
Comments: This Laboratory Grown Diamond was created by Chemical Vapor Deposition (CVD) growth process.