



ELECTRONIC COPY

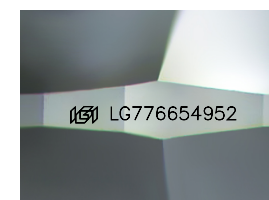
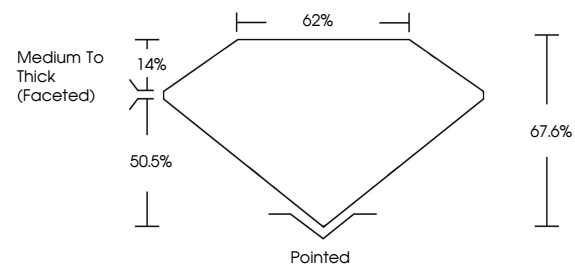
LG776654952
Report verification at igi.org



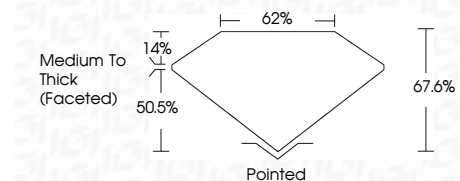
February 23, 2026
IGI Report Number **LG776654952**
Description **LABORATORY GROWN DIAMOND**
Shape and Cutting Style **SQUARE CUSHION MODIFIED BRILLIANT**
Measurements **7.23 X 7.22 X 4.88 MM**
GRADING RESULTS
Carat Weight **1.93 CARAT**
Color Grade **E**
Clarity Grade **VS 1**

February 23, 2026
IGI Report Number **LG776654952**
Description **LABORATORY GROWN DIAMOND**
Shape and Cutting Style **SQUARE CUSHION MODIFIED BRILLIANT**
Measurements **7.23 X 7.22 X 4.88 MM**

PROPORTIONS



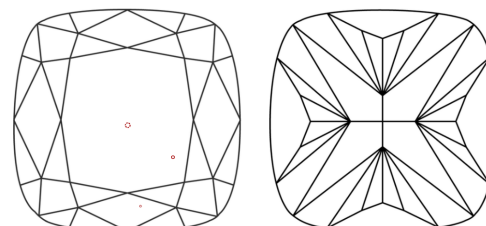
Sample Image Used



GRADING RESULTS

Carat Weight **1.93 CARAT**
Color Grade **E**
Clarity Grade **VS 1**

CLARITY CHARACTERISTICS



KEY TO SYMBOLS

Red symbols indicate internal characteristics.
Green symbols indicate external characteristics.

ADDITIONAL GRADING INFORMATION

Polish **EXCELLENT**
Symmetry **EXCELLENT**
Fluorescence **NONE**
Inscription(s) **IGI LG776654952**

Comments: This Laboratory Grown Diamond was created by Chemical Vapor Deposition (CVD) growth process.
Type IIa

COLOR

D E F G H I J Faint Very Light Light

CLARITY

FL	IF	VS ¹⁻²	VS ¹⁻²	SI ¹⁻²	I ¹⁻³
Flawless	Internally Flawless	Very Very Slightly Included	Very Slightly Included	Slightly Included	Included

ADDITIONAL GRADING INFORMATION

Polish **EXCELLENT**
Symmetry **EXCELLENT**
Fluorescence **NONE**
Inscription(s) **IGI LG776654952**
Comments: This Laboratory Grown Diamond was created by Chemical Vapor Deposition (CVD) growth process.
Type IIa



February 23, 2026
IGI Report No **LG776654952**
SQUARE CUSHION MODIFIED BRILLIANT
7.23 X 7.22 X 4.88 MM
Carat Weight **1.93 CARAT**
Color Grade **E**
Clarity Grade **VS 1**
Table **67.6%**
Girdle **62%**
Medium To Thick (Faceted)
Culet **Pointed**
Polish **EXCELLENT**
Symmetry **EXCELLENT**
Fluorescence **NONE**
Inscription(s) **IGI LG776654952**
Comments: This Laboratory Grown Diamond was created by Chemical Vapor Deposition (CVD) growth process.
Type IIa