



ELECTRONIC COPY

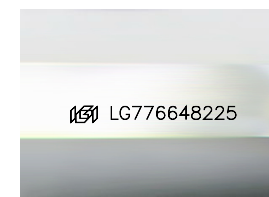
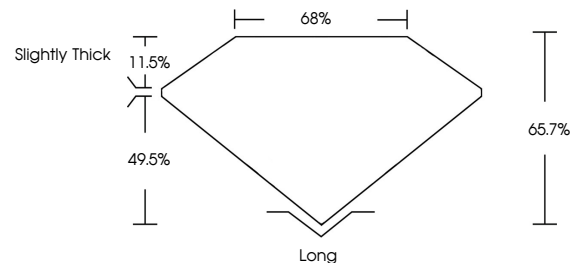
LG776648225
Report verification at igi.org



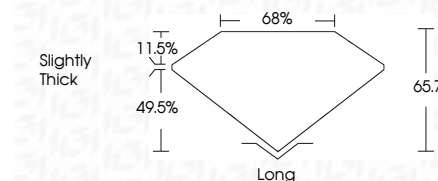
February 20, 2026
IGI Report Number **LG776648225**
Description **LABORATORY GROWN DIAMOND**
Shape and Cutting Style **CUT CORNERED
RECTANGULAR MIXED CUT**
Measurements **14.81 X 10.24 X 6.73 MM**
GRADING RESULTS
Carat Weight **10.31 CARATS**
Color Grade **F**
Clarity Grade **VS 1**

February 20, 2026
IGI Report Number **LG776648225**
Description **LABORATORY GROWN DIAMOND**
Shape and Cutting Style **CUT CORNERED RECTANGULAR
MIXED CUT**
Measurements **14.81 X 10.24 X 6.73 MM**
GRADING RESULTS
Carat Weight **10.31 CARATS**
Color Grade **F**
Clarity Grade **VS 1**

PROPORTIONS



Sample Image Used



ADDITIONAL GRADING INFORMATION

Polish **EXCELLENT**
Symmetry **EXCELLENT**
Fluorescence **NONE**
Inscription(s) **IGI LG776648225**

Comments: This Laboratory Grown Diamond was created by Chemical Vapor Deposition (CVD) growth process.
Type IIa

ADDITIONAL GRADING INFORMATION

Polish **EXCELLENT**
Symmetry **EXCELLENT**
Fluorescence **NONE**
Inscription(s) **IGI LG776648225**
Comments: This Laboratory Grown Diamond was created by Chemical Vapor Deposition (CVD) growth process.
Type IIa

COLOR

D E F G H I J Faint Very Light Light

CLARITY

FL	IF	VS ¹⁻²	VS ¹⁻²	SI ¹⁻²	I ¹⁻³
Flawless	Internally Flawless	Very Very Slightly Included	Very Slightly Included	Slightly Included	Included



IGI



February 20, 2026
IGI Report No. LG776648225
CUT CORNERED RECT. MIXED CUT
14.81 X 10.24 X 6.73 MM
10.31 CARATS
F
VS 1
65.7%
68%
Slightly Thick
Long
EXCELLENT
EXCELLENT
NONE
IGI LG776648225
Comments: This Laboratory Grown Diamond was created by Chemical Vapor Deposition (CVD) growth process.
Type IIa