



ELECTRONIC COPY

LG776647871
Report verification at igi.org



February 19, 2026

IGI Report Number **LG776647871**

Description **LABORATORY GROWN DIAMOND**

Shape and Cutting Style **PRINCESS CUT**

Measurements **6.66 X 6.54 X 4.84 MM**

GRADING RESULTS

Carat Weight **2.01 CARATS**

Color Grade **D**

Clarity Grade **VS 1**

February 19, 2026

IGI Report Number **LG776647871**

Description **LABORATORY GROWN DIAMOND**

Shape and Cutting Style **PRINCESS CUT**

Measurements **6.66 X 6.54 X 4.84 MM**

GRADING RESULTS

Carat Weight **2.01 CARATS**

Color Grade **D**

Clarity Grade **VS 1**

ADDITIONAL GRADING INFORMATION

Polish **EXCELLENT**

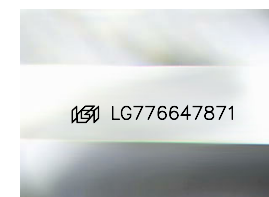
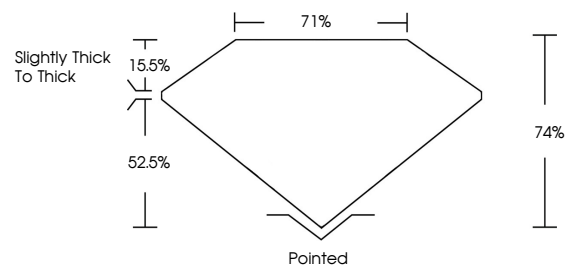
Symmetry **EXCELLENT**

Fluorescence **NONE**

Inscription(s) **IGI LG776647871**

Comments: This Laboratory Grown Diamond was created by Chemical Vapor Deposition (CVD) growth process. Type IIa

PROPORTIONS



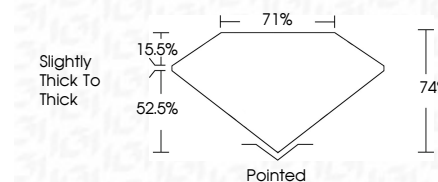
Sample Image Used

COLOR

D E F G H I J Faint Very Light Light

CLARITY

FL	IF	VS ¹⁻²	VS ¹⁻²	SI ¹⁻²	I ¹⁻³
Flawless	Internally Flawless	Very Very Slightly Included	Very Slightly Included	Slightly Included	Included



ADDITIONAL GRADING INFORMATION

Polish **EXCELLENT**

Symmetry **EXCELLENT**

Fluorescence **NONE**

Inscription(s) **IGI LG776647871**

Comments: This Laboratory Grown Diamond was created by Chemical Vapor Deposition (CVD) growth process. Type IIa



IGI



February 19, 2026
IGI Report No LG776647871
PRINCESS CUT

2.01 CARATS
Carat Weight
Color Grade **D**
Clarity Grade **VS 1**
Table **71%**
Girdle **Slightly Thick To Thick**

Pointed
Culet
Polish **EXCELLENT**
Symmetry **EXCELLENT**
Fluorescence **NONE**
Inscription(s) **IGI LG776647871**

Comments: This Laboratory Grown Diamond was created by Chemical Vapor Deposition (CVD) growth process. Type IIa