

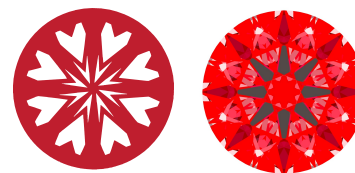


# INTERNATIONAL GEMOLOGICAL INSTITUTE

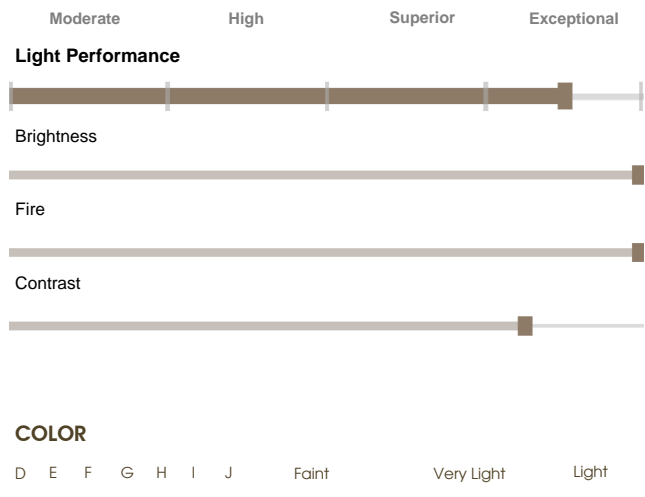
LG776647763  
Report verification at igi.org

## LIGHT PERFORMANCE REPORT

Light Performance Grade: Exceptional



### Structured Light Environment Representation



FL	IF	VS <sup>1-2</sup>	VS <sup>1-2</sup>	SI <sup>1-2</sup>	I <sup>1-3</sup>
Flawless	Internally Flawless	Very Very Slightly Included	Very Slightly Included	Slightly Included	Included



February 19, 2026  
 IGI Report Number: **LG776647763**  
 Description: **LABORATORY GROWN DIAMOND**  
 Shape and Cutting Style: **ROUND BRILLIANT**  
 Measurements: **8.12 - 8.16 X 5.05 MM**  
**GRADING RESULTS**  
 Carat Weight: **2.06 CARATS**  
 Color Grade: **D**  
 Clarity Grade: **VVS 2**  
 Cut Grade: **IDEAL**

## ELECTRONIC COPY LABORATORY GROWN DIAMOND REPORT

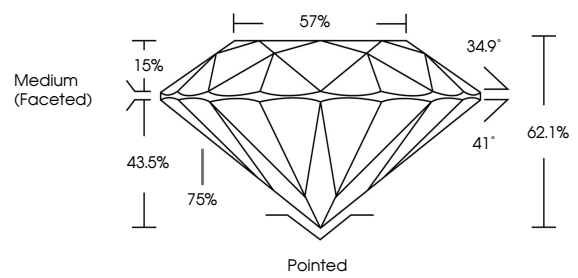
February 19, 2026  
 IGI Report Number: **LG776647763**  
 Description: **LABORATORY GROWN DIAMOND**  
 Shape and Cutting Style: **ROUND BRILLIANT**  
 Measurements: **8.12 - 8.16 x 5.05 mm**

**GRADING RESULTS**  
 Carat Weight: **2.06 CARATS**  
 Color Grade: **D**  
 Clarity Grade: **VVS 2**  
 Cut Grade: **IDEAL**

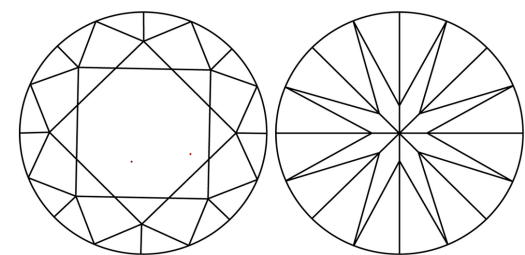
**ADDITIONAL GRADING INFORMATION**  
 Polish: **EXCELLENT**  
 Symmetry: **EXCELLENT**  
 Fluorescence: **NONE**  
 Inscription(s): **IGI LG776647763**

Comments: HEARTS & ARROWS  
 This Laboratory Grown Diamond was created by Chemical Vapor Deposition (CVD) growth process. Type IIa

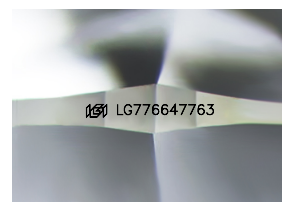
### PROPORTIONS



### CLARITY CHARACTERISTICS



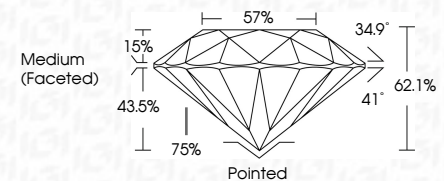
**KEY TO SYMBOLS**  
 Red symbols indicate internal characteristics.  
 Green symbols indicate external characteristics.



Sample Image Used

www.igi.org

© IGI 2020, International Gemological Institute FD - 10 20



**ADDITIONAL GRADING INFORMATION**  
 Polish: **EXCELLENT**  
 Symmetry: **EXCELLENT**  
 Fluorescence: **NONE**  
 Inscription(s): **IGI LG776647763**  
 Comments: HEARTS & ARROWS  
 This Laboratory Grown Diamond was created by Chemical Vapor Deposition (CVD) growth process. Type IIa



February 19, 2026	IGI Report No LG776647763	ROUND BRILLIANT	2.06 CARATS	D	VVS 2	IDEAL	62.1%	57%	Medium (Faceted)	Pointed	EXCELLENT	EXCELLENT	NONE	IGI LG776647763
8.12 - 8.16 X 5.05 MM	Carat Weight	Color Grade	Clarity Grade	Cut Grade	Depth	Table	Grade	Culet	Polish	Symmetry	Fluorescence	Inscription(s)	Comments: HEARTS & ARROWS This Laboratory Grown Diamond was created by Chemical Vapor Deposition (CVD) growth process. Type IIa	