



**ELECTRONIC COPY**

LG776645088  
Report verification at igi.org



February 18, 2026

IGI Report Number **LG776645088**

Description **LABORATORY GROWN DIAMOND**

Shape and Cutting Style **OPTICA STELO (ROUND  
MODIFIED BRILLIANT)**

Measurements **8.84 - 8.93 X 5.60 MM**

**GRADING RESULTS**

Carat Weight **2.77 CARATS**

Color Grade **E**

Clarity Grade **VVS 2**

Cut Grade **EXCELLENT**

**LABORATORY GROWN DIAMOND REPORT**

February 18, 2026

IGI Report Number **LG776645088**

Description **LABORATORY GROWN DIAMOND**

Shape and Cutting Style **OPTICA STELO (ROUND  
MODIFIED BRILLIANT)**

Measurements **8.84 - 8.93 X 5.60 MM**

**GRADING RESULTS**

Carat Weight **2.77 CARATS**

Color Grade **E**

Clarity Grade **VVS 2**

Cut Grade **EXCELLENT**

**ADDITIONAL GRADING INFORMATION**

Polish **EXCELLENT**

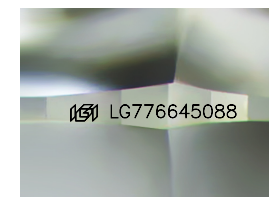
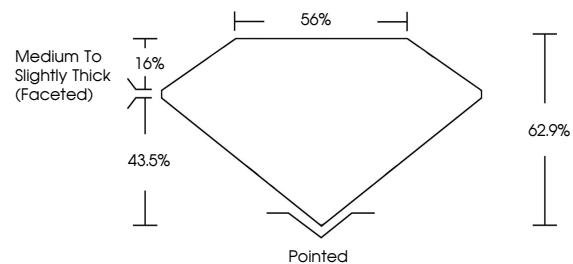
Symmetry **EXCELLENT**

Fluorescence **NONE**

Inscription(s) **IGI LG776645088**

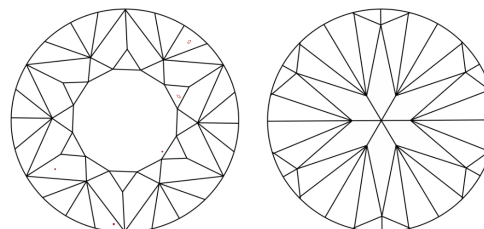
Comments: This Laboratory Grown Diamond was created by Chemical Vapor Deposition (CVD) growth process. Type IIa

**PROPORTIONS**



Sample Image Used

**CLARITY CHARACTERISTICS**



**KEY TO SYMBOLS**

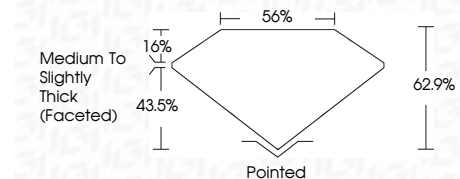
Red symbols indicate internal characteristics.  
Green symbols indicate external characteristics.

**COLOR**

D E F G H I J Faint Very Light Light

**CLARITY**

FL	IF	VVS <sup>1-2</sup>	VS <sup>1-2</sup>	SI <sup>1-2</sup>	I <sup>1-3</sup>
Flawless	Internally Flawless	Very Very Slightly Included	Very Slightly Included	Slightly Included	Included



**ADDITIONAL GRADING INFORMATION**

Polish **EXCELLENT**

Symmetry **EXCELLENT**

Fluorescence **NONE**

Inscription(s) **IGI LG776645088**

Comments: This Laboratory Grown Diamond was created by Chemical Vapor Deposition (CVD) growth process. Type IIa



**IGI**



February 18, 2026  
IGI Report No LG776645088  
**OPTICA STELO (ROUND MODIFIED BRILLIANT)**  
**8.84 - 8.93 X 5.60 MM**  
Carat Weight **2.77 CARATS**  
Color Grade **E**  
Clarity Grade **VVS 2**  
Cut Grade **EXCELLENT**  
Depth **62.9%**  
Table **56%**  
Girdle **Medium To Slightly Thick (Faceted)**  
Culet **Pointed**  
Polish **EXCELLENT**  
Symmetry **EXCELLENT**  
Fluorescence **NONE**  
Inscription(s) **IGI LG776645088**  
Comments: This Laboratory Grown Diamond was created by Chemical Vapor Deposition (CVD) growth process. Type IIa