



**ELECTRONIC COPY**

LG776644443  
Report verification at igi.org



February 25, 2026

IGI Report Number **LG776644443**

Description **LABORATORY GROWN DIAMOND**

Shape and Cutting Style **CUT CORNERED  
RECTANGULAR MODIFIED  
BRILLIANT**

Measurements **16.33 X 11.71 X 7.11 MM**

**GRADING RESULTS**

Carat Weight **12.16 CARATS**

Color Grade **FANCY INTENSE PINK**

Clarity Grade **VS 2**

February 25, 2026

IGI Report Number **LG776644443**

Description **LABORATORY GROWN DIAMOND**

Shape and Cutting Style **CUT CORNERED RECTANGULAR  
MODIFIED BRILLIANT**

Measurements **16.33 X 11.71 X 7.11 MM**

**GRADING RESULTS**

Carat Weight **12.16 CARATS**

Color Grade **FANCY INTENSE PINK**

Clarity Grade **VS 2**

**ADDITIONAL GRADING INFORMATION**

Polish **EXCELLENT**

Symmetry **EXCELLENT**

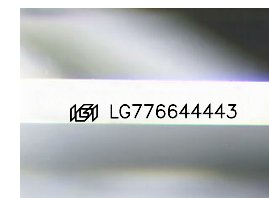
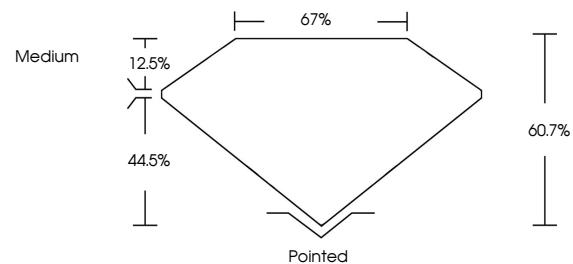
Fluorescence **STRONG**

Inscription(s) **IGI LG776644443**

Comments: This Laboratory Grown Diamond was created by Chemical Vapor Deposition (CVD) growth process.

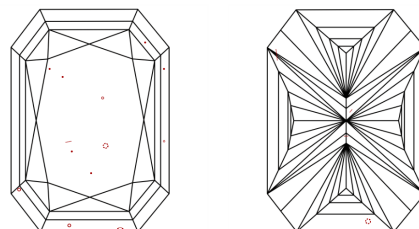
Indications of post-growth treatment.

**PROPORTIONS**



Sample Image Used

**CLARITY CHARACTERISTICS**



**KEY TO SYMBOLS**

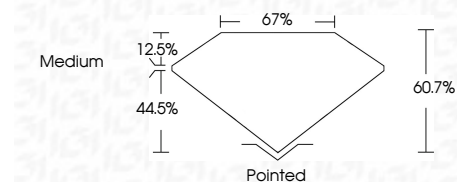
Red symbols indicate internal characteristics.  
Green symbols indicate external characteristics.

**COLOR**

D E F G H I J Faint Very Light Light

**CLARITY**

FL	IF	VS <sup>1-2</sup>	VS <sup>1-2</sup>	SI <sup>1-2</sup>	I <sup>1-3</sup>
Flawless	Internally Flawless	Very Very Slightly Included	Very Slightly Included	Slightly Included	Included



**ADDITIONAL GRADING INFORMATION**

Polish **EXCELLENT**

Symmetry **EXCELLENT**

Fluorescence **STRONG**

Inscription(s) **IGI LG776644443**

Comments: This Laboratory Grown Diamond was created by Chemical Vapor Deposition (CVD) growth process. Indications of post-growth treatment.



February 25, 2026  
IGI Report No LG776644443  
CUT CORNERED RECT. MODIFIED BRILLIANT

16.33 X 11.71 X 7.11 MM  
12.16 CARATS  
FANCY INTENSE PINK  
VS 2  
60.7%  
67%  
Medium

Pointed  
EXCELLENT  
EXCELLENT  
STRONG  
IGI LG776644443

Comments: This Laboratory Grown Diamond was created by Chemical Vapor Deposition (CVD) growth process. Indications of post-growth treatment.