



ELECTRONIC COPY

LG776643159
Report verification at igi.org



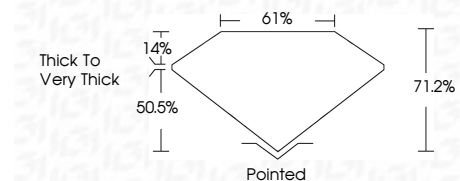
March 23, 2026
IGI Report Number **LG776643159**
Description **LABORATORY GROWN DIAMOND**

Shape and Cutting Style **CUT CORNERED
RECTANGULAR MODIFIED
BRILLIANT**

Measurements **10.80 X 7.60 X 5.41 MM**

GRADING RESULTS

Carat Weight **4.19 CARATS**
Color Grade **FANCY INTENSE YELLOW**
Clarity Grade **VVS 2**



ADDITIONAL GRADING INFORMATION

Polish **EXCELLENT**
Symmetry **EXCELLENT**
Fluorescence **NONE**
Inscription(s) **IGI LG776643159**

Comments: This Laboratory Grown Diamond was created by Chemical Vapor Deposition (CVD) growth process.



March 23, 2026
IGI Report No LG776643159
CUT CORNERED RECT. MODIFIED BRILLIANT
10.80 X 7.60 X 5.41 MM
4.19 CARATS
FANCY INTENSE YELLOW
VVS 2
71.2%
61%
Thick to Very Thick
Pointed
EXCELLENT
EXCELLENT
NONE
IGI LG776643159
Comments: This Laboratory Grown Diamond was created by Chemical Vapor Deposition (CVD) growth process.

LABORATORY GROWN DIAMOND REPORT

March 23, 2026
IGI Report Number **LG776643159**
Description **LABORATORY GROWN DIAMOND**
Shape and Cutting Style **CUT CORNERED RECTANGULAR
MODIFIED BRILLIANT**
Measurements **10.80 X 7.60 X 5.41 MM**

GRADING RESULTS

Carat Weight **4.19 CARATS**
Color Grade **FANCY INTENSE YELLOW**
Clarity Grade **VVS 2**

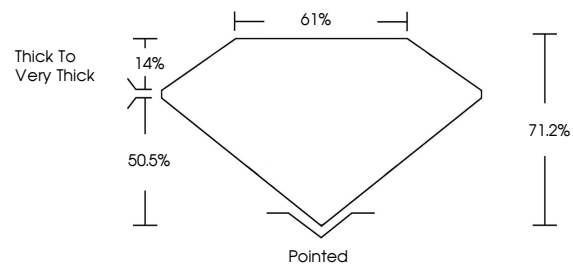
ADDITIONAL GRADING INFORMATION

Polish **EXCELLENT**
Symmetry **EXCELLENT**
Fluorescence **NONE**

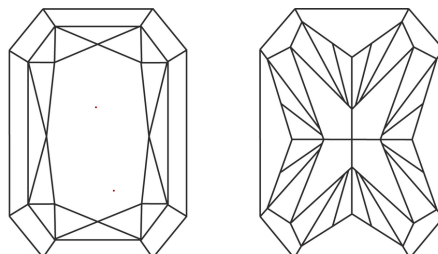
Inscription(s) **IGI LG776643159**

Comments: This Laboratory Grown Diamond was created by Chemical Vapor Deposition (CVD) growth process.

PROPORTIONS

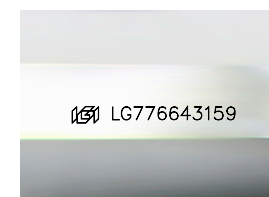


CLARITY CHARACTERISTICS



KEY TO SYMBOLS

Red symbols indicate internal characteristics.
Green symbols indicate external characteristics.



Sample Image Used

COLOR

D E F G H I J Faint Very Light Light

CLARITY

FL	IF	VVS ¹⁻²	VS ¹⁻²	SI ¹⁻²	I ¹⁻³
Flawless	Internally Flawless	Very Very Slightly Included	Very Slightly Included	Slightly Included	Included

