



**ELECTRONIC COPY**

LG776640168  
Report verification at igi.org



March 16, 2026

IGI Report Number **LG776640168**

Description **LABORATORY GROWN DIAMOND**

Shape and Cutting Style **ROUND BRILLIANT**

Measurements **9.13 - 9.21 X 5.78 MM**

**GRADING RESULTS**

Carat Weight **3.00 CARATS**

Color Grade **F**

Clarity Grade **VVS 2**

Cut Grade **EXCELLENT**

March 16, 2026  
IGI Report Number **LG776640168**  
Description **LABORATORY GROWN DIAMOND**  
Shape and Cutting Style **ROUND BRILLIANT**  
Measurements **9.13 - 9.21 X 5.78 MM**

**GRADING RESULTS**

Carat Weight **3.00 CARATS**

Color Grade **F**

Clarity Grade **VVS 2**

Cut Grade **EXCELLENT**

**ADDITIONAL GRADING INFORMATION**

Polish **EXCELLENT**

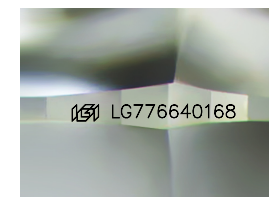
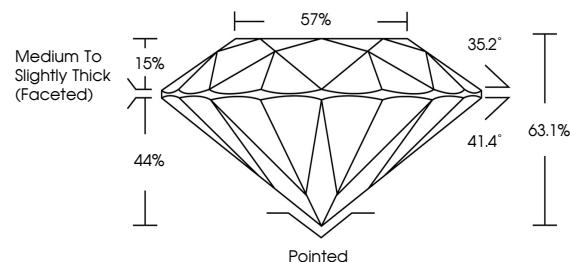
Symmetry **EXCELLENT**

Fluorescence **NONE**

Inscription(s) **LG776640168**

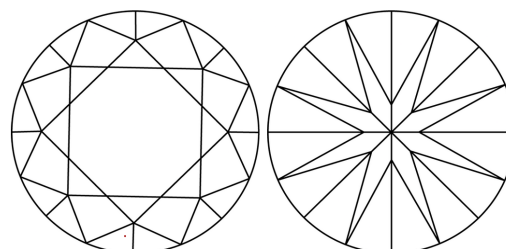
Comments: This Laboratory Grown Diamond was created by Chemical Vapor Deposition (CVD) growth process.  
Type IIa

**PROPORTIONS**



Sample Image Used

**CLARITY CHARACTERISTICS**



**KEY TO SYMBOLS**

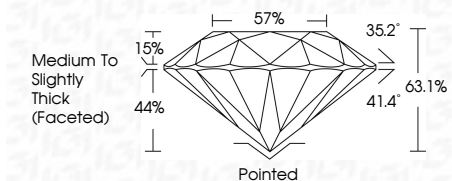
Red symbols indicate internal characteristics.  
Green symbols indicate external characteristics.

**COLOR**

D E F G H I J Faint Very Light Light

**CLARITY**

FL	IF	VVS <sup>1-2</sup>	VS <sup>1-2</sup>	SI <sup>1-2</sup>	I <sup>1-3</sup>
Flawless	Internally Flawless	Very Very Slightly Included	Very Slightly Included	Slightly Included	Included



**ADDITIONAL GRADING INFORMATION**

Polish **EXCELLENT**

Symmetry **EXCELLENT**

Fluorescence **NONE**

Inscription(s) **LG776640168**

Comments: This Laboratory Grown Diamond was created by Chemical Vapor Deposition (CVD) growth process.  
Type IIa



**IGI**



March 16, 2026  
IGI Report No **LG776640168**  
**ROUND BRILLIANT**  
9.13 - 9.21 X 5.78 MM  
3.00 CARATS  
F  
Color Grade  
VVS 2  
Clarity Grade  
EXCELLENT  
Depth  
63.1%  
Table  
57%  
Girdle  
Medium To Slightly Thick (Faceted)  
Culet  
Pointed  
Polish  
EXCELLENT  
Symmetry  
EXCELLENT  
Fluorescence  
NONE  
Inscription(s)  
 **LG776640168**  
Comments: This Laboratory Grown Diamond was created by Chemical Vapor Deposition (CVD) growth process.  
Type IIa