



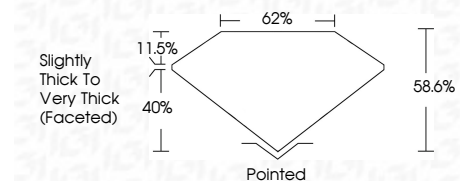
**ELECTRONIC COPY**

LG776637215  
Report verification at [igi.org](http://igi.org)



March 12, 2026  
IGI Report Number **LG776637215**  
Description **LABORATORY GROWN DIAMOND**  
Shape and Cutting Style **OVAL MODIFIED BRILLIANT**  
Measurements **18.31 X 11.06 X 6.48 MM**

**GRADING RESULTS**  
Carat Weight **10.75 CARATS**  
Color Grade **FANCY INTENSE PINK**  
Clarity Grade **VS 1**



**ADDITIONAL GRADING INFORMATION**  
Polish **EXCELLENT**  
Symmetry **EXCELLENT**  
Fluorescence **STRONG**  
Inscription(s) **IGI LG776637215**  
Comments: This Laboratory Grown Diamond was created by Chemical Vapor Deposition (CVD) growth process. Indications of post-growth treatment.



March 12, 2026  
IGI Report No **LG776637215**  
**OVAL MODIFIED BRILLIANT**  
**18.31 X 11.06 X 6.48 MM**  
Carat Weight **10.75 CARATS**  
Color Grade **FANCY INTENSE PINK**  
Clarity Grade **VS 1**  
Depth **58.6%**  
Table **40%**  
Girdle **Slightly Thick To Very Thick (Faceted)**  
Culet **Pointed**  
Polish **EXCELLENT**  
Symmetry **EXCELLENT**  
Fluorescence **STRONG**  
Inscription(s) **IGI LG776637215**  
Comments: This Laboratory Grown Diamond was created by Chemical Vapor Deposition (CVD) growth process. Indications of post-growth treatment.

**LABORATORY GROWN DIAMOND REPORT**

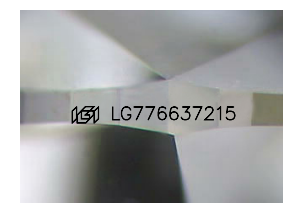
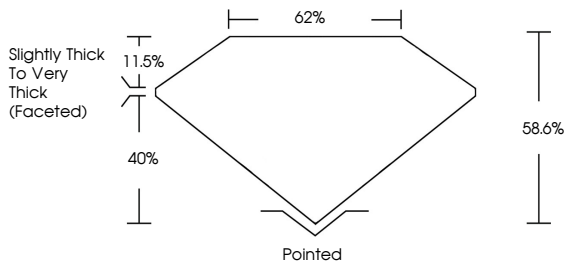
March 12, 2026  
IGI Report Number **LG776637215**  
Description **LABORATORY GROWN DIAMOND**  
Shape and Cutting Style **OVAL MODIFIED BRILLIANT**  
Measurements **18.31 X 11.06 X 6.48 MM**

**GRADING RESULTS**  
Carat Weight **10.75 CARATS**  
Color Grade **FANCY INTENSE PINK**  
Clarity Grade **VS 1**

**ADDITIONAL GRADING INFORMATION**  
Polish **EXCELLENT**  
Symmetry **EXCELLENT**  
Fluorescence **STRONG**  
Inscription(s) **IGI LG776637215**

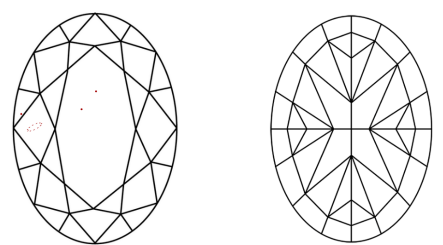
Comments: This Laboratory Grown Diamond was created by Chemical Vapor Deposition (CVD) growth process. Indications of post-growth treatment.

**PROPORTIONS**



Sample Image Used

**CLARITY CHARACTERISTICS**



**KEY TO SYMBOLS**  
Red symbols indicate internal characteristics.  
Green symbols indicate external characteristics.

**COLOR**

D	E	F	G	H	I	J	Faint	Very Light	Light
---	---	---	---	---	---	---	-------	------------	-------

**CLARITY**

FL	IF	VS <sup>1-2</sup>	VS <sup>1-2</sup>	SI <sup>1-2</sup>	I <sup>1-3</sup>
Flawless	Internally Flawless	Very Very Slightly Included	Very Slightly Included	Slightly Included	Included

