



**ELECTRONIC COPY**

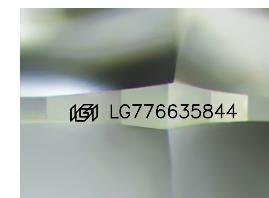
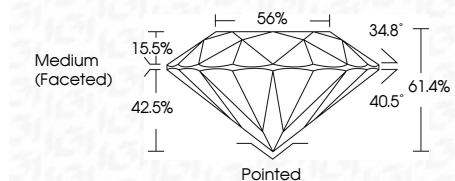
LG776635844  
Report verification at igi.org



March 13, 2026  
IGI Report Number **LG776635844**  
Description **LABORATORY GROWN DIAMOND**  
Shape and Cutting Style **ROUND BRILLIANT**  
Measurements **8.10 - 8.14 X 4.98 MM**

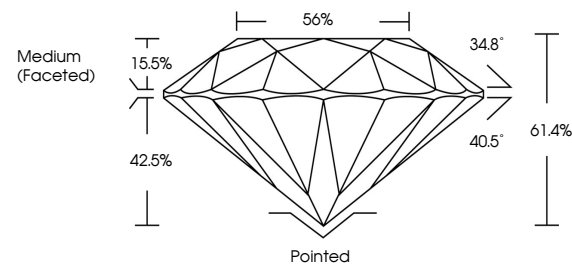
**GRADING RESULTS**

Carat Weight **2.01 CARATS**  
Color Grade **F**  
Clarity Grade **VS 1**  
Cut Grade **IDEAL**

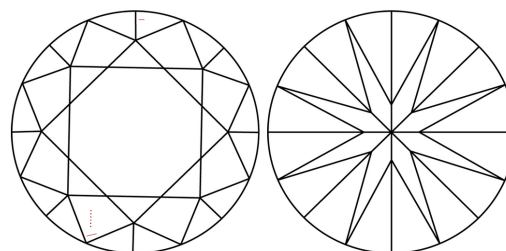


Sample Image Used

**PROPORTIONS**



**CLARITY CHARACTERISTICS**



**KEY TO SYMBOLS**

Red symbols indicate internal characteristics.  
Green symbols indicate external characteristics.

**COLOR**

D E F G H I J Faint Very Light Light

**CLARITY**

FL	IF	VS <sup>1-2</sup>	VS <sup>1-2</sup>	SI <sup>1-2</sup>	I <sup>1-3</sup>
Flawless	Internally Flawless	Very Very Slightly Included	Very Slightly Included	Slightly Included	Included

**ADDITIONAL GRADING INFORMATION**

Polish **EXCELLENT**  
Symmetry **EXCELLENT**  
Fluorescence **NONE**  
Inscription(s) **IGI LG776635844**  
Comments: This Laboratory Grown Diamond was created by Chemical Vapor Deposition (CVD) growth process. Type IIa



**IGI**



March 13, 2026  
IGI Report No LG776635844  
**ROUND BRILLIANT**

**8.10 - 8.14 X 4.98 MM**

**2.01 CARATS**  
F

**VS 1**  
**IDEAL**  
61.4%  
56%

**Medium (Faceted)**

**Pointed**  
**EXCELLENT**  
**EXCELLENT**  
**NONE**  
IGI LG776635844

**Culet**  
**Polish**  
**Symmetry**  
**Fluorescence**  
**Inscription(s)**

**Comments:** This Laboratory Grown Diamond was created by Chemical Vapor Deposition (CVD) growth process. Type IIa