



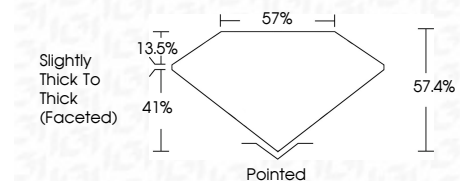
**ELECTRONIC COPY**

LG776635264  
Report verification at igi.org



March 10, 2026  
IGI Report Number **LG776635264**  
Description **LABORATORY GROWN DIAMOND**  
Shape and Cutting Style **HEART BRILLIANT**  
Measurements **12.43 X 13.13 X 7.54 MM**

**GRADING RESULTS**  
Carat Weight **7.08 CARATS**  
Color Grade **E**  
Clarity Grade **VS 2**



**ADDITIONAL GRADING INFORMATION**  
Polish **EXCELLENT**  
Symmetry **EXCELLENT**  
Fluorescence **NONE**  
Inscription(s) **IGI LG776635264**  
Comments: This Laboratory Grown Diamond was created by Chemical Vapor Deposition (CVD) growth process. Type IIa



March 10, 2026  
IGI Report No LG776635264  
**HEART BRILLIANT**  
12.43 X 13.13 X 7.54 MM  
7.08 CARATS  
E  
VS 2  
57.4%  
57%  
Slightly Thick To Thick (Faceted)  
Pointed  
EXCELLENT  
EXCELLENT  
NONE  
IGI LG776635264  
Comments: This Laboratory Grown Diamond was created by Chemical Vapor Deposition (CVD) growth process. Type IIa

**LABORATORY GROWN DIAMOND REPORT**

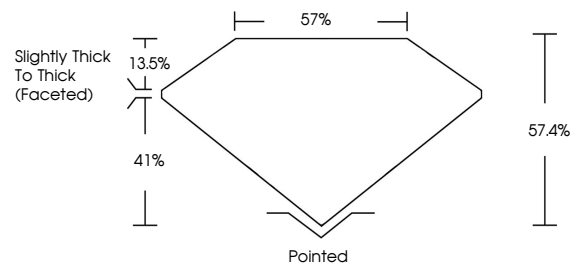
March 10, 2026  
IGI Report Number **LG776635264**  
Description **LABORATORY GROWN DIAMOND**  
Shape and Cutting Style **HEART BRILLIANT**  
Measurements **12.43 X 13.13 X 7.54 MM**

**GRADING RESULTS**  
Carat Weight **7.08 CARATS**  
Color Grade **E**  
Clarity Grade **VS 2**

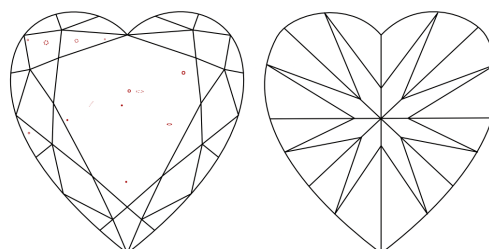
**ADDITIONAL GRADING INFORMATION**  
Polish **EXCELLENT**  
Symmetry **EXCELLENT**  
Fluorescence **NONE**  
Inscription(s) **IGI LG776635264**

Comments: This Laboratory Grown Diamond was created by Chemical Vapor Deposition (CVD) growth process. Type IIa

**PROPORTIONS**

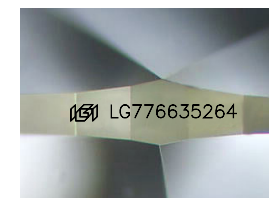


**CLARITY CHARACTERISTICS**



**KEY TO SYMBOLS**

Red symbols indicate internal characteristics.  
Green symbols indicate external characteristics.



Sample Image Used

**COLOR**

D E F G H I J Faint Very Light Light

**CLARITY**

FL	IF	VS <sup>1-2</sup>	VS <sup>1-2</sup>	SI <sup>1-2</sup>	I <sup>1-3</sup>
Flawless	Internally Flawless	Very Very Slightly Included	Very Slightly Included	Slightly Included	Included

