



ELECTRONIC COPY

LG776632328
Report verification at igi.org



March 16, 2026

IGI Report Number **LG776632328**

Description **LABORATORY GROWN DIAMOND**

Shape and Cutting Style **EMERALD CUT**

Measurements **13.16 X 8.18 X 4.97 MM**

GRADING RESULTS

Carat Weight **6.02 CARATS**

Color Grade **FANCY INTENSE PINK**

Clarity Grade **VS 2**

LABORATORY GROWN DIAMOND REPORT

March 16, 2026

IGI Report Number **LG776632328**

Description **LABORATORY GROWN DIAMOND**

Shape and Cutting Style **EMERALD CUT**

Measurements **13.16 X 8.18 X 4.97 MM**

GRADING RESULTS

Carat Weight **6.02 CARATS**

Color Grade **FANCY INTENSE PINK**

Clarity Grade **VS 2**

ADDITIONAL GRADING INFORMATION

Polish **EXCELLENT**

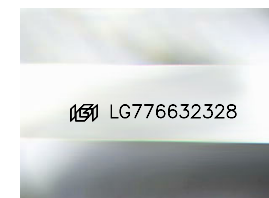
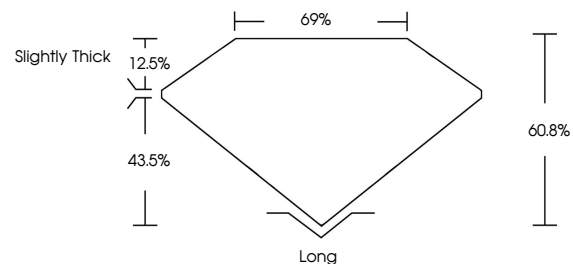
Symmetry **EXCELLENT**

Fluorescence **SLIGHT**

Inscription(s) **IGI LG776632328**

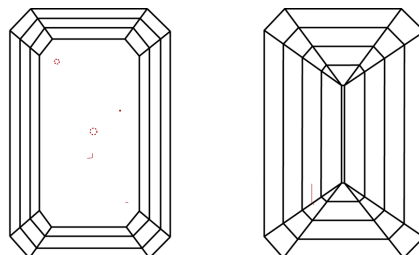
Comments: This Laboratory Grown Diamond was created by Chemical Vapor Deposition (CVD) growth process. Indications of post-growth treatment.

PROPORTIONS



Sample Image Used

CLARITY CHARACTERISTICS



KEY TO SYMBOLS

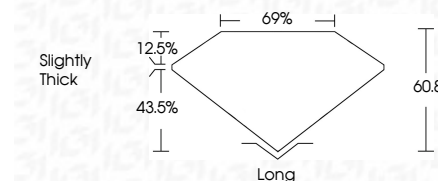
Red symbols indicate internal characteristics.
Green symbols indicate external characteristics.

COLOR

D E F G H I J Faint Very Light Light

CLARITY

FL	IF	VS ¹⁻²	VS ¹⁻²	SI ¹⁻²	I ¹⁻³
Flawless	Internally Flawless	Very Very Slightly Included	Very Slightly Included	Slightly Included	Included



ADDITIONAL GRADING INFORMATION

Polish **EXCELLENT**

Symmetry **EXCELLENT**

Fluorescence **SLIGHT**

Inscription(s) **IGI LG776632328**

Comments: This Laboratory Grown Diamond was created by Chemical Vapor Deposition (CVD) growth process. Indications of post-growth treatment.



IGI



March 16, 2026
IGI Report No LG776632328
EMERALD CUT

6.02 CARATS
Carat Weight
FANCY INTENSE PINK
Color Grade
VS 2
Clarity Grade
60.8%
Depth
69%
Table
Slightly Thick
Grades

Long
Cutlet
EXCELLENT
Polish
EXCELLENT
Symmetry
SLIGHT
Fluorescence
Inscription(s)
IGI LG776632328

Comments: This Laboratory Grown Diamond was created by Chemical Vapor Deposition (CVD) growth process. Indications of post-growth treatment.