



ELECTRONIC COPY

LG776631567
Report verification at igi.org



March 24, 2026
IGI Report Number **LG776631567**
Description **LABORATORY GROWN DIAMOND**
Shape and Cutting Style **CUSHION MODIFIED BRILLIANT**
Measurements **11.52 X 8.72 X 5.63 MM**
GRADING RESULTS
Carat Weight **5.11 CARATS**
Color Grade **FANCY VIVID YELLOW**
Clarity Grade **VVS 2**

March 24, 2026
IGI Report Number **LG776631567**
Description **LABORATORY GROWN DIAMOND**
Shape and Cutting Style **CUSHION MODIFIED BRILLIANT**
Measurements **11.52 X 8.72 X 5.63 MM**

GRADING RESULTS

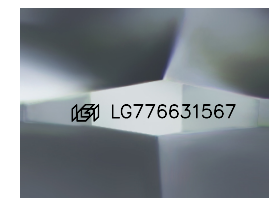
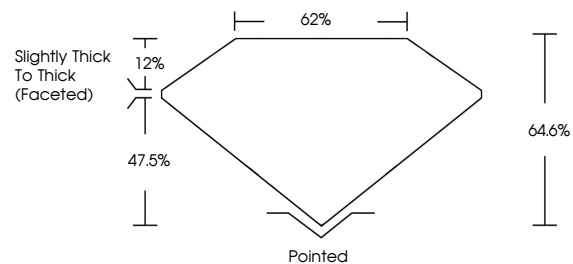
Carat Weight **5.11 CARATS**
Color Grade **FANCY VIVID YELLOW**
Clarity Grade **VVS 2**

ADDITIONAL GRADING INFORMATION

Polish **EXCELLENT**
Symmetry **EXCELLENT**
Fluorescence **NONE**
Inscription(s) **IGI LG776631567**

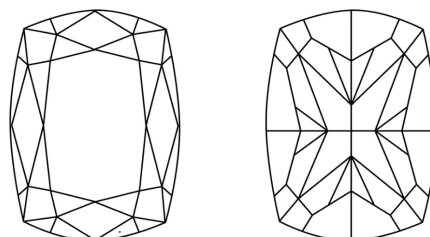
Comments: This Laboratory Grown Diamond was created by Chemical Vapor Deposition (CVD) growth process.

PROPORTIONS



Sample Image Used

CLARITY CHARACTERISTICS



KEY TO SYMBOLS

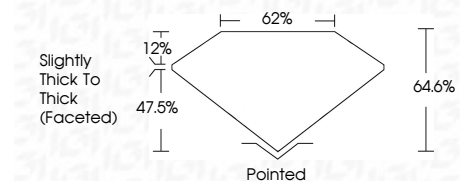
Red symbols indicate internal characteristics.
Green symbols indicate external characteristics.

COLOR

D E F G H I J Faint Very Light Light

CLARITY

| FL | IF | VVS ¹⁻² | VS ¹⁻² | SI ¹⁻² | I ¹⁻³ |
|----------|---------------------|-----------------------------|------------------------|-------------------|------------------|
| Flawless | Internally Flawless | Very Very Slightly Included | Very Slightly Included | Slightly Included | Included |



ADDITIONAL GRADING INFORMATION

Polish **EXCELLENT**
Symmetry **EXCELLENT**
Fluorescence **NONE**
Inscription(s) **IGI LG776631567**
Comments: This Laboratory Grown Diamond was created by Chemical Vapor Deposition (CVD) growth process.



IGI



March 24, 2026
IGI Report No LG776631567
CUSHION MODIFIED BRILLIANT
11.52 X 8.72 X 5.63 MM
5.11 CARATS
FANCY VIVID YELLOW
VVS 2
64.6%
62%
Slightly Thick To Thick (Faceted)
Pointed
EXCELLENT
EXCELLENT
NONE
IGI LG776631567

Comments: This Laboratory Grown Diamond was created by Chemical Vapor Deposition (CVD) growth process.