



LABORATORY GROWN DIAMOND REPORT

February 24, 2026
 IGI Report Number **LG776622893**
 Description **LABORATORY GROWN DIAMOND**
 Shape and Cutting Style **ROUND BRILLIANT**
 Measurements **4.77 - 4.81 X 2.94 MM**

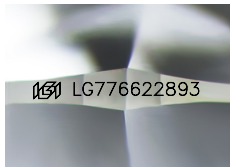
GRADING RESULTS

Carat Weight **0.41 CARAT**
 Color Grade **D**
 Clarity Grade **VVS 1**
 Cut Grade **IDEAL**

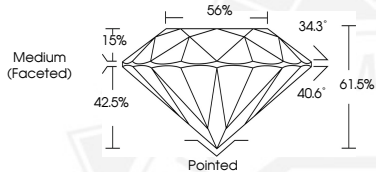
ADDITIONAL GRADING INFORMATION

Polish **EXCELLENT**
 Symmetry **EXCELLENT**
 Fluorescence **NONE**
 Inscription(s) **IGI LG776622893**

Comments: As Grown - No indication of post-growth treatment. This Laboratory Grown Diamond was created by High Pressure High Temperature (HPHT) growth process. Type II



Sample Image Used



February 24, 2026
 IGI Report Number **LG776622893**
 ROUND BRILLIANT
 LABORATORY GROWN DIAMOND
 4.77 - 4.81 X 2.94 MM
 0.41 CARAT
 D
 VVS 1
 IDEAL
 EXCELLENT
 EXCELLENT
 NONE
 IGI LG776622893

Comments: As Grown - No indication of post-growth treatment. This Laboratory Grown Diamond was created by High Pressure High Temperature (HPHT) growth process. Type II



February 24, 2026
 IGI Report Number **LG776622893**
 ROUND BRILLIANT
 LABORATORY GROWN DIAMOND
 4.77 - 4.81 X 2.94 MM
 0.41 CARAT
 D
 VVS 1
 IDEAL
 EXCELLENT
 EXCELLENT
 NONE
 IGI LG776622893

Comments: As Grown - No indication of post-growth treatment. This Laboratory Grown Diamond was created by High Pressure High Temperature (HPHT) growth process. Type II

THIS DOCUMENT WAS PRODUCED WITH THE FOLLOWING SECURITY MEASURES: SPECIAL DOCUMENT PAPER, INK SCREENS, WATERMARK, BACKGROUND DESIGNS, HOLOGRAM AND OTHER SECURITY FEATURES NOT LISTED AND DO EXCEED DOCUMENT SECURITY INDUSTRY GUIDELINES.