



**ELECTRONIC COPY**

LG776619278  
Report verification at [igi.org](http://igi.org)



March 16, 2026

IGI Report Number **LG776619278**

Description **LABORATORY GROWN DIAMOND**

Shape and Cutting Style **ROUND BRILLIANT**

Measurements **8.13 - 8.16 X 5.05 MM**

**GRADING RESULTS**

Carat Weight **2.06 CARATS**

Color Grade **E**

Clarity Grade **VVS 2**

Cut Grade **IDEAL**

March 16, 2026

IGI Report Number **LG776619278**

Description **LABORATORY GROWN DIAMOND**

Shape and Cutting Style **ROUND BRILLIANT**

Measurements **8.13 - 8.16 X 5.05 MM**

**GRADING RESULTS**

Carat Weight **2.06 CARATS**

Color Grade **E**

Clarity Grade **VVS 2**

Cut Grade **IDEAL**

**ADDITIONAL GRADING INFORMATION**

Polish **EXCELLENT**

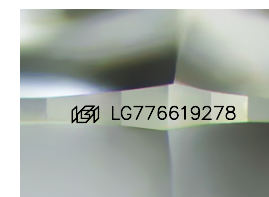
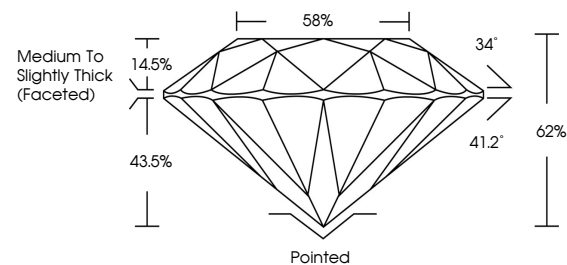
Symmetry **EXCELLENT**

Fluorescence **NONE**

Inscription(s) **IGI LG776619278**

Comments: This Laboratory Grown Diamond was created by Chemical Vapor Deposition (CVD) growth process. Type IIa

**PROPORTIONS**



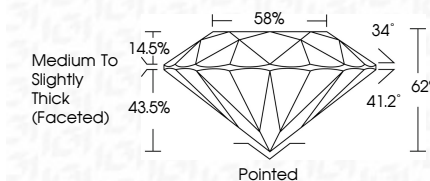
Sample Image Used

**COLOR**

D E F G H I J Faint Very Light Light

**CLARITY**

FL	IF	VS <sup>1-2</sup>	VS <sup>1-2</sup>	SI <sup>1-2</sup>	I <sup>1-3</sup>
Flawless	Internally Flawless	Very Very Slightly Included	Very Slightly Included	Slightly Included	Included



**ADDITIONAL GRADING INFORMATION**

Polish **EXCELLENT**

Symmetry **EXCELLENT**

Fluorescence **NONE**

Inscription(s) **IGI LG776619278**

Comments: This Laboratory Grown Diamond was created by Chemical Vapor Deposition (CVD) growth process. Type IIa



**IGI**



March 16, 2026	IGI Report No LG776619278	2.06 CARATS	E	Pointed	EXCELLENT	EXCELLENT	NONE	IGI LG776619278
8.13 - 8.16 X 5.05 MM	ROUND BRILLIANT	Carat Weight	VVS 2	Polish	IDEAL	EXCELLENT	NONE	None
		Color Grade	IDEAL	Symmetry	62%	EXCELLENT	NONE	None
		Clarity Grade	62%	Fluorescence	88%	EXCELLENT	NONE	None
		Depth	Medium To Slightly Thick (Faceted)	Inscription(s)				
		Table						
		Girdle						
		Culet						
		Comments: This Laboratory Grown Diamond was created by Chemical Vapor Deposition (CVD) growth process. Type IIa						