



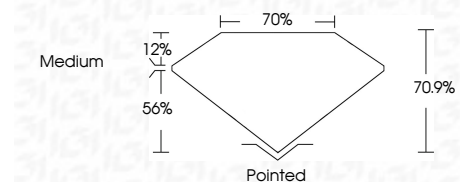
ELECTRONIC COPY

LG776618735 Report verification at igi.org



February 18, 2026 IGI Report Number LG776618735 Description LABORATORY GROWN DIAMOND Shape and Cutting Style PRINCESS CUT Measurements 10.13 X 9.92 X 7.03 MM

GRADING RESULTS Carat Weight 6.05 CARATS Color Grade F Clarity Grade VS 2

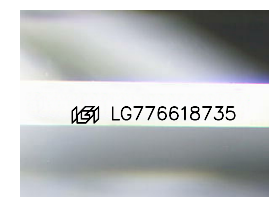


ADDITIONAL GRADING INFORMATION Polish EXCELLENT Symmetry EXCELLENT Fluorescence NONE Inscription(s) LG776618735 Comments: This Laboratory Grown Diamond was created by Chemical Vapor Deposition (CVD) growth process. Type IIa



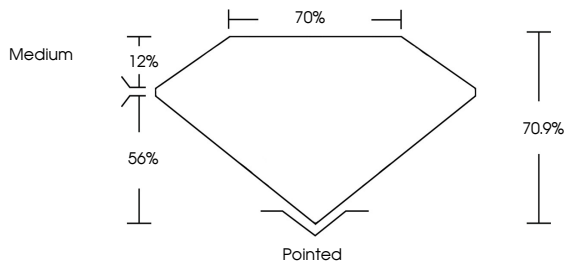
February 18, 2026 IGI Report No LG776618735 PRINCESS CUT 6.05 CARATS F VS 2 10.13 X 9.92 X 7.03 MM 70.9% 70% Medium Pointed EXCELLENT EXCELLENT NONE NONE LG776618735

Comments: This Laboratory Grown Diamond was created by Chemical Vapor Deposition (CVD) growth process. Type IIa

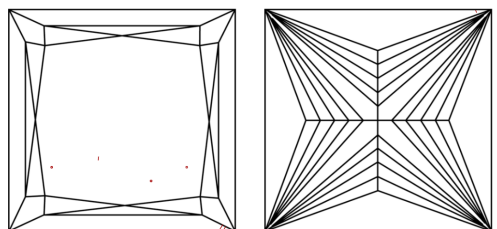


Sample Image Used

PROPORTIONS



CLARITY CHARACTERISTICS



KEY TO SYMBOLS Red symbols indicate internal characteristics. Green symbols indicate external characteristics.

COLOR

Color scale from D to J, with Faint, Very Light, and Light labels.

CLARITY

Clarity scale from FL to I 1-3, with sub-labels like Internally Flawless, Very Slightly Included, etc.



February 18, 2026 IGI Report Number LG776618735 Description LABORATORY GROWN DIAMOND Shape and Cutting Style PRINCESS CUT Measurements 10.13 X 9.92 X 7.03 MM

GRADING RESULTS Carat Weight 6.05 CARATS Color Grade F Clarity Grade VS 2

ADDITIONAL GRADING INFORMATION Polish EXCELLENT Symmetry EXCELLENT Fluorescence NONE Inscription(s) LG776618735

Comments: This Laboratory Grown Diamond was created by Chemical Vapor Deposition (CVD) growth process. Type IIa