



ELECTRONIC COPY

LG776617765
Report verification at igi.org



February 25, 2026

IGI Report Number **LG776617765**

Description **LABORATORY GROWN DIAMOND**

Shape and Cutting Style **HEXAGONAL STEP CUT**

Measurements **19.96 X 9.09 X 5.64 MM**

GRADING RESULTS

Carat Weight **7.15 CARATS**

Color Grade **FANCY INTENSE PINK**

Clarity Grade **VS 1**

February 25, 2026
IGI Report Number **LG776617765**
Description **LABORATORY GROWN DIAMOND**
Shape and Cutting Style **HEXAGONAL STEP CUT**
Measurements **19.96 X 9.09 X 5.64 MM**

GRADING RESULTS

Carat Weight **7.15 CARATS**

Color Grade **FANCY INTENSE PINK**

Clarity Grade **VS 1**

ADDITIONAL GRADING INFORMATION

Polish **EXCELLENT**

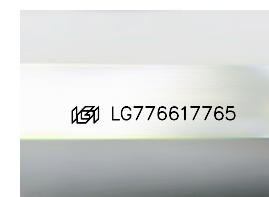
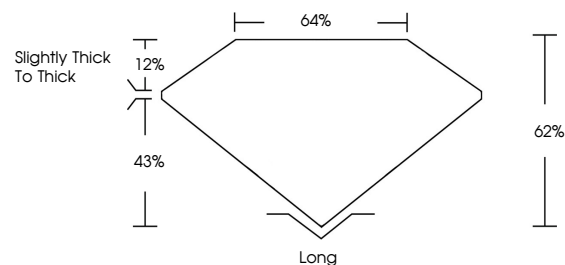
Symmetry **EXCELLENT**

Fluorescence **SLIGHT**

Inscription(s) **IGI LG776617765**

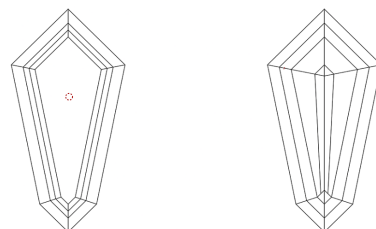
Comments: This Laboratory Grown Diamond was created by Chemical Vapor Deposition (CVD) growth process. Indications of post-growth treatment.

PROPORTIONS



Sample Image Used

CLARITY CHARACTERISTICS



KEY TO SYMBOLS

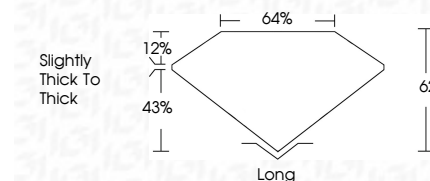
Red symbols indicate internal characteristics.
Green symbols indicate external characteristics.

COLOR

D E F G H I J Faint Very Light Light

CLARITY

FL	IF	VS ¹⁻²	VS ¹⁻²	SI ¹⁻²	I ¹⁻³
Flawless	Internally Flawless	Very Very Slightly Included	Very Slightly Included	Slightly Included	Included



ADDITIONAL GRADING INFORMATION

Polish **EXCELLENT**

Symmetry **EXCELLENT**

Fluorescence **SLIGHT**

Inscription(s) **IGI LG776617765**

Comments: This Laboratory Grown Diamond was created by Chemical Vapor Deposition (CVD) growth process. Indications of post-growth treatment.



February 25, 2026
IGI Report No LG776617765
HEXAGONAL STEP CUT
19.96 X 9.09 X 5.64 MM
7.15 CARATS
FANCY INTENSE PINK
VS 1
62%
43%
Slightly thick to thick
Long
EXCELLENT
EXCELLENT
SLIGHT
IGI LG776617765
Comments: This Laboratory Grown Diamond was created by Chemical Vapor Deposition (CVD) growth process. Indications of post-growth treatment.