



**ELECTRONIC COPY**

LG776617764  
Report verification at igi.org



February 25, 2026  
IGI Report Number **LG776617764**  
Description **LABORATORY GROWN DIAMOND**  
Shape and Cutting Style **HEXAGONAL MODIFIED BRILLIANT**  
Measurements **20.05 X 9.22 X 5.54 MM**  
**GRADING RESULTS**  
Carat Weight **7.12 CARATS**  
Color Grade **FANCY INTENSE PINK**  
Clarity Grade **VS 2**

February 25, 2026  
IGI Report Number **LG776617764**  
Description **LABORATORY GROWN DIAMOND**  
Shape and Cutting Style **HEXAGONAL MODIFIED BRILLIANT**  
Measurements **20.05 X 9.22 X 5.54 MM**

**GRADING RESULTS**

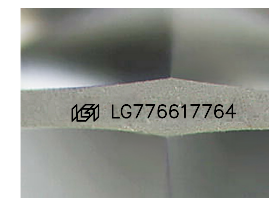
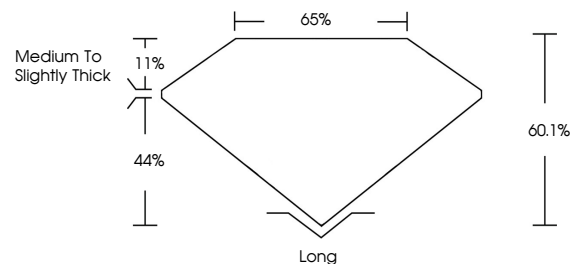
Carat Weight **7.12 CARATS**  
Color Grade **FANCY INTENSE PINK**  
Clarity Grade **VS 2**

**ADDITIONAL GRADING INFORMATION**

Polish **EXCELLENT**  
Symmetry **EXCELLENT**  
Fluorescence **SLIGHT**  
Inscription(s) **IGI LG776617764**

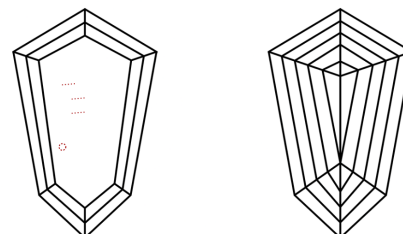
Comments: This Laboratory Grown Diamond was created by Chemical Vapor Deposition (CVD) growth process.  
Indications of post-growth treatment.

**PROPORTIONS**



Sample Image Used

**CLARITY CHARACTERISTICS**



**KEY TO SYMBOLS**

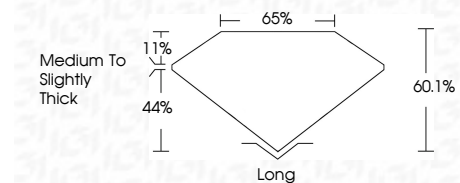
Red symbols indicate internal characteristics.  
Green symbols indicate external characteristics.

**COLOR**

D E F G H I J Faint Very Light Light

**CLARITY**

FL	IF	VS <sup>1-2</sup>	VS <sup>1-2</sup>	SI <sup>1-2</sup>	I <sup>1-3</sup>
Flawless	Internally Flawless	Very Very Slightly Included	Very Slightly Included	Slightly Included	Included



**ADDITIONAL GRADING INFORMATION**

Polish **EXCELLENT**  
Symmetry **EXCELLENT**  
Fluorescence **SLIGHT**  
Inscription(s) **IGI LG776617764**  
Comments: This Laboratory Grown Diamond was created by Chemical Vapor Deposition (CVD) growth process.  
Indications of post-growth treatment.



February 25, 2026  
IGI Report No. LG776617764  
**HEXAGONAL MODIFIED BRILLIANT**  
20.05 X 9.22 X 5.54 MM  
7.12 CARATS  
FANCY INTENSE PINK  
VS 2  
60.1%  
65%  
Medium to Slightly Thick  
Long  
EXCELLENT  
EXCELLENT  
SLIGHT  
IGI LG776617764  
Comments: This Laboratory Grown Diamond was created by Chemical Vapor Deposition (CVD) growth process.  
Indications of post-growth treatment.