



**ELECTRONIC COPY**

LG776617754  
Report verification at igi.org



February 26, 2026

IGI Report Number **LG776617754**

Description **LABORATORY GROWN DIAMOND**

Shape and Cutting Style **CUT CORNERED  
RECTANGULAR MODIFIED  
BRILLIANT**

Measurements **8.29 X 5.89 X 4.11 MM**

**GRADING RESULTS**

Carat Weight **2.02 CARATS**

Color Grade **FANCY BROWN**

Clarity Grade **SI 1**

February 26, 2026

IGI Report Number **LG776617754**

Description **LABORATORY GROWN DIAMOND**

Shape and Cutting Style **CUT CORNERED RECTANGULAR  
MODIFIED BRILLIANT**

Measurements **8.29 X 5.89 X 4.11 MM**

**GRADING RESULTS**

Carat Weight **2.02 CARATS**

Color Grade **FANCY BROWN**

Clarity Grade **SI 1**

**ADDITIONAL GRADING INFORMATION**

Polish **VERY GOOD**

Symmetry **VERY GOOD**

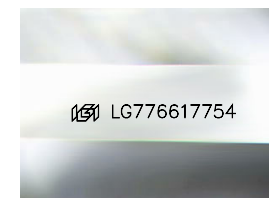
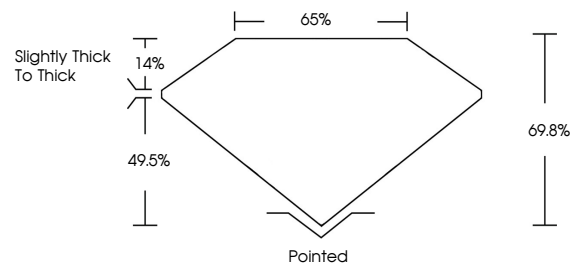
Fluorescence **SLIGHT**

Inscription(s) **IGI LG776617754**

Comments: This Laboratory Grown Diamond was created by Chemical Vapor Deposition (CVD) growth process.

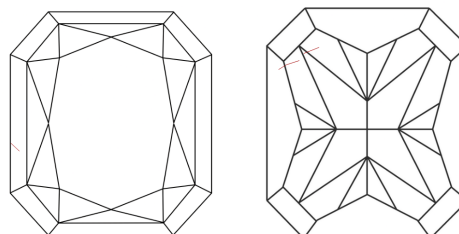
Indications of post-growth treatment.

**PROPORTIONS**



Sample Image Used

**CLARITY CHARACTERISTICS**



**KEY TO SYMBOLS**

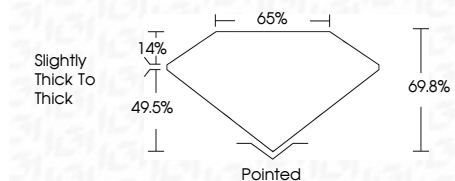
Red symbols indicate internal characteristics.  
Green symbols indicate external characteristics.

**COLOR**

D E F G H I J Faint Very Light Light

**CLARITY**

FL	IF	VS <sup>1-2</sup>	VS <sup>1-2</sup>	SI <sup>1-2</sup>	I <sup>1-3</sup>
Flawless	Internally Flawless	Very Very Slightly Included	Very Slightly Included	Slightly Included	Included



**ADDITIONAL GRADING INFORMATION**

Polish **VERY GOOD**

Symmetry **VERY GOOD**

Fluorescence **SLIGHT**

Inscription(s) **IGI LG776617754**

Comments: This Laboratory Grown Diamond was created by Chemical Vapor Deposition (CVD) growth process. Indications of post-growth treatment.



**IGI**



February 26, 2026  
IGI Report No LG776617754  
CUT CORNERED RECT. MODIFIED BRILLIANT  
8.29 X 5.89 X 4.11 MM  
2.02 CARATS  
FANCY BROWN  
SI 1  
69.8%  
65%  
Slightly thick to thick  
Pointed  
VERY GOOD  
VERY GOOD  
SLIGHT  
IGI LG776617754

Comments: This Laboratory Grown Diamond was created by Chemical Vapor Deposition (CVD) growth process. Indications of post-growth treatment.