



ELECTRONIC COPY

LABORATORY GROWN DIAMOND REPORT

February 23, 2026
IGI Report Number LG776615357
Description LABORATORY GROWN DIAMOND
Shape and Cutting Style CUT CORNERED RECTANGULAR MIXED CUT
Measurements 10.80 X 7.74 X 5.29 MM

GRADING RESULTS

Carat Weight 4.05 CARATS
Color Grade FANCY INTENSE YELLOW
Clarity Grade VVS 2

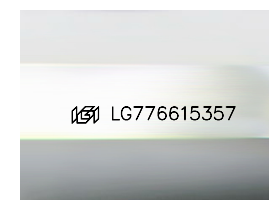
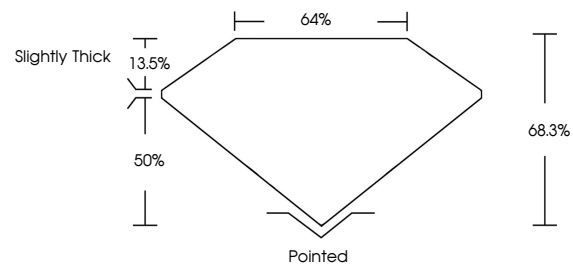
ADDITIONAL GRADING INFORMATION

Polish EXCELLENT
Symmetry EXCELLENT
Fluorescence NONE

Inscription(s) LG776615357

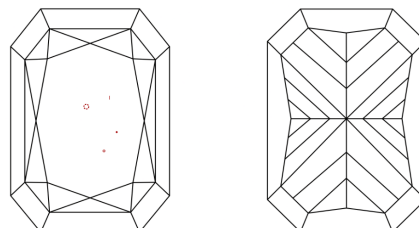
Comments: This Laboratory Grown Diamond was created by Chemical Vapor Deposition (CVD) growth process.

PROPORTIONS



Sample Image Used

CLARITY CHARACTERISTICS



KEY TO SYMBOLS

Red symbols indicate internal characteristics.
Green symbols indicate external characteristics.

COLOR

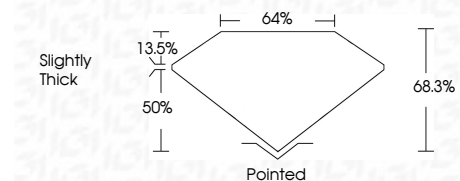
D E F G H I J Faint Very Light Light

CLARITY

FL IF VVS¹⁻² VS¹⁻² SI¹⁻² I¹⁻³
Flawless Internally Flawless Very Very Slightly Included Very Slightly Included Slightly Included Included



February 23, 2026
IGI Report Number LG776615357
Description LABORATORY GROWN DIAMOND
Shape and Cutting Style CUT CORNERED RECTANGULAR MIXED CUT
Measurements 10.80 X 7.74 X 5.29 MM
GRADING RESULTS
Carat Weight 4.05 CARATS
Color Grade FANCY INTENSE YELLOW
Clarity Grade VVS 2



ADDITIONAL GRADING INFORMATION

Polish EXCELLENT
Symmetry EXCELLENT
Fluorescence NONE
Inscription(s) LG776615357
Comments: This Laboratory Grown Diamond was created by Chemical Vapor Deposition (CVD) growth process.



February 23, 2026
IGI Report No LG776615357
CUT CORNERED RECT. MIXED CUT
4.05 CARATS
Carat Weight
Color Grade FANCY INTENSE YELLOW
Clarity Grade VVS 2
Depth 68.3%
Table 50%
Girdle Slightly Thick
Culet Pointed
Polish EXCELLENT
Symmetry EXCELLENT
Fluorescence NONE
Inscription(s) LG776615357
Comments: This Laboratory Grown Diamond was created by Chemical Vapor Deposition (CVD) growth process.