



ELECTRONIC COPY

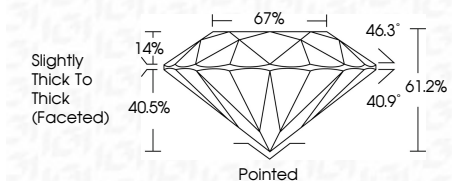
LG776614942
Report verification at igi.org



February 19, 2026
IGI Report Number **LG776614942**
Description **LABORATORY GROWN DIAMOND**
Shape and Cutting Style **ROUND MIXED CUT**
Measurements **7.60 - 7.65 X 4.68 MM**

GRADING RESULTS

Carat Weight **2.02 CARATS**
Color Grade **E**
Clarity Grade **VS 1**



ADDITIONAL GRADING INFORMATION

Polish **EXCELLENT**
Symmetry **EXCELLENT**
Fluorescence **NONE**
Inscription(s) **IGI LG776614942**
Comments: This Laboratory Grown Diamond was created by Chemical Vapor Deposition (CVD) growth process. Type IIa



IGI

February 19, 2026
IGI Report No LG776614942
ROUND MIXED CUT
2.02 CARATS
E
Carat Weight
Color Grade
Clarity Grade
Depth
Table
Girdle
Slightly Thick To Thick (Faceted)
61.2%
40.5%
Pointed
EXCELLENT
EXCELLENT
NONE
IGI LG776614942
Inscription(s)
Comments: This Laboratory Grown Diamond was created by Chemical Vapor Deposition (CVD) growth process. Type IIa

February 19, 2026
IGI Report Number **LG776614942**
Description **LABORATORY GROWN DIAMOND**
Shape and Cutting Style **ROUND MIXED CUT**
Measurements **7.60 - 7.65 X 4.68 MM**

GRADING RESULTS

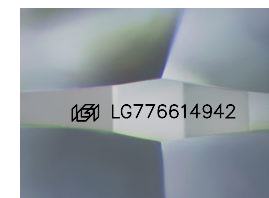
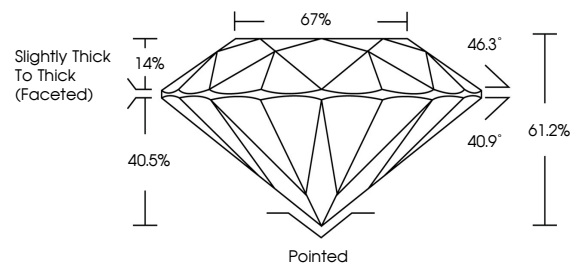
Carat Weight **2.02 CARATS**
Color Grade **E**
Clarity Grade **VS 1**

ADDITIONAL GRADING INFORMATION

Polish **EXCELLENT**
Symmetry **EXCELLENT**
Fluorescence **NONE**
Inscription(s) **IGI LG776614942**

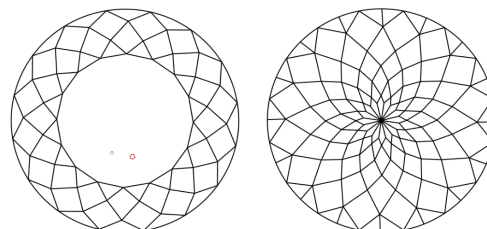
Comments: This Laboratory Grown Diamond was created by Chemical Vapor Deposition (CVD) growth process. Type IIa

PROPORTIONS



Sample Image Used

CLARITY CHARACTERISTICS



KEY TO SYMBOLS

Red symbols indicate internal characteristics.
Green symbols indicate external characteristics.

COLOR

D E F G H I J Faint Very Light Light

CLARITY

FL	IF	VS ¹⁻²	VS ¹⁻²	SI ¹⁻²	I ¹⁻³
Flawless	Internally Flawless	Very Very Slightly Included	Very Slightly Included	Slightly Included	Included

