



March 16, 2026

**IGI Report Number LG776614367**  
**MARQUISE BRILLIANT**  
**LABORATORY GROWN DIAMOND**  
**9.95 X 4.97 X 3.06 MM**

Carat Weight **0.90 CARAT**  
Color Grade **E**  
Clarity Grade **VS 1**  
Polish **EXCELLENT**  
Symmetry **EXCELLENT**  
Fluorescence **NONE**  
Inscription(s) **IGI LG776614367**

Comments: This Laboratory Grown Diamond was created by Chemical Vapor Deposition (CVD) growth process. Type IIa

**LABORATORY GROWN DIAMOND REPORT**

March 16, 2026  
IGI Report Number **LG776614367**  
Description **LABORATORY GROWN DIAMOND**  
Shape and Cutting Style **MARQUISE BRILLIANT**  
Measurements **9.95 X 4.97 X 3.06 MM**

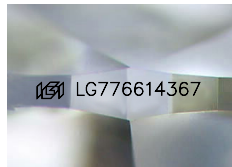
**GRADING RESULTS**

Carat Weight **0.90 CARAT**  
Color Grade **E**  
Clarity Grade **VS 1**

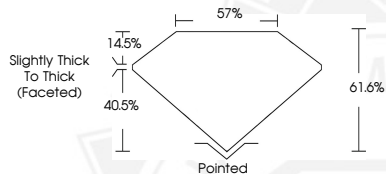
**ADDITIONAL GRADING INFORMATION**

Polish **EXCELLENT**  
Symmetry **EXCELLENT**  
Fluorescence **NONE**  
Inscription(s) **IGI LG776614367**

Comments: This Laboratory Grown Diamond was created by Chemical Vapor Deposition (CVD) growth process.  
Type IIa



Sample Image Used



March 16, 2026

**IGI Report Number LG776614367**  
**MARQUISE BRILLIANT**  
**LABORATORY GROWN DIAMOND**  
**9.95 X 4.97 X 3.06 MM**

Carat Weight **0.90 CARAT**  
Color Grade **E**  
Clarity Grade **VS 1**  
Polish **EXCELLENT**  
Symmetry **EXCELLENT**  
Fluorescence **NONE**  
Inscription(s) **IGI LG776614367**

Comments: This Laboratory Grown Diamond was created by Chemical Vapor Deposition (CVD) growth process. Type IIa



THIS DOCUMENT WAS PRODUCED WITH THE FOLLOWING SECURITY MEASURES: SPECIAL DOCUMENT PAPER, INK SCREENS, WATERMARK, BACKGROUND DESIGNS, HOLOGRAM AND OTHER SECURITY FEATURES NOT LISTED AND DO EXCEED DOCUMENT SECURITY INDUSTRY GUIDELINES.