



ELECTRONIC COPY

LG776613720
Report verification at igi.org



February 18, 2026

IGI Report Number **LG776613720**

Description **LABORATORY GROWN DIAMOND**

Shape and Cutting Style **ROUND BRILLIANT**

Measurements **10.08 - 10.12 X 6.13 MM**

GRADING RESULTS

Carat Weight **3.84 CARATS**

Color Grade **E**

Clarity Grade **INTERNALLY FLAWLESS**

Cut Grade **IDEAL**

February 18, 2026

IGI Report Number **LG776613720**

Description **LABORATORY GROWN DIAMOND**

Shape and Cutting Style **ROUND BRILLIANT**

Measurements **10.08 - 10.12 X 6.13 MM**

GRADING RESULTS

Carat Weight **3.84 CARATS**

Color Grade **E**

Clarity Grade **INTERNALLY FLAWLESS**

Cut Grade **IDEAL**

ADDITIONAL GRADING INFORMATION

Polish **EXCELLENT**

Symmetry **EXCELLENT**

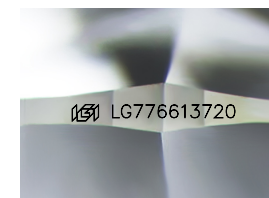
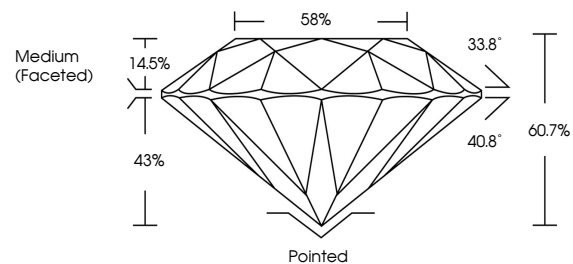
Fluorescence **NONE**

Inscription(s) **LG776613720**

Comments: HEARTS & ARROWS

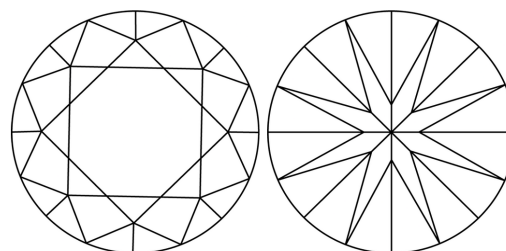
As Grown - No indication of post-growth treatment.
This Laboratory Grown Diamond was created by High Pressure High Temperature (HPHT) growth process.
Type II

PROPORTIONS



Sample Image Used

CLARITY CHARACTERISTICS



KEY TO SYMBOLS

Red symbols indicate internal characteristics.
Green symbols indicate external characteristics.

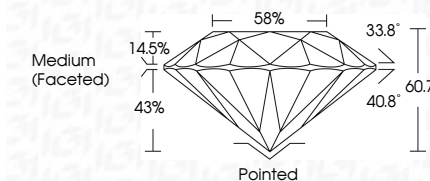


COLOR

D E F G H I J Faint Very Light Light

CLARITY

FL	IF	VS ¹⁻²	VS ¹⁻²	SI ¹⁻²	I ¹⁻³
Flawless	Internally Flawless	Very Very Slightly Included	Very Slightly Included	Slightly Included	Included



ADDITIONAL GRADING INFORMATION

Polish **EXCELLENT**

Symmetry **EXCELLENT**

Fluorescence **NONE**

Inscription(s) **LG776613720**

Comments: HEARTS & ARROWS

As Grown - No indication of post-growth treatment.
This Laboratory Grown Diamond was created by High Pressure High Temperature (HPHT) growth process.
Type II



IGI



February 18, 2026	IGI Report No LG776613720	ROUND BRILLIANT	3.84 CARATS	E	IF	IDEAL	60.7%	58%	Medium (Faceted)	Pointed	EXCELLENT	EXCELLENT	NONE	LG776613720
<p>Comments: HEARTS & ARROWS As Grown - No indication of post-growth treatment. This Laboratory Grown Diamond was created by High Pressure High Temperature (HPHT) growth process. Type II</p>														