



LABORATORY GROWN DIAMOND REPORT

February 18, 2026
 IGI Report Number **LG776613709**
 Description **LABORATORY GROWN DIAMOND**
 Shape and Cutting Style **ROUND BRILLIANT**
 Measurements **5.08 - 5.09 X 3.15 MM**

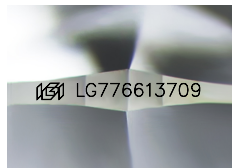
GRADING RESULTS

Carat Weight **0.50 CARAT**
 Color Grade **D**
 Clarity Grade **VVS 1**
 Cut Grade **IDEAL**

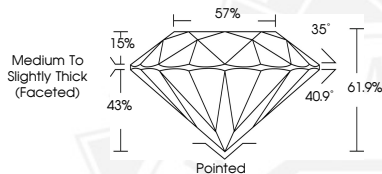
ADDITIONAL GRADING INFORMATION

Polish **EXCELLENT**
 Symmetry **EXCELLENT**
 Fluorescence **NONE**
 Inscription(s) **IGI LG776613709**

Comments: HEARTS & ARROWS
 As Grown - No indication of post-growth treatment.
 This Laboratory Grown Diamond was created by High Pressure High
 Temperature (HPHT) growth process.
 Type II



Sample Image Used



HEARTS & ARROWS



February 18, 2026
 IGI Report Number **LG776613709**
 ROUND BRILLIANT
 LABORATORY GROWN DIAMOND
 5.08 - 5.09 X 3.15 MM
 Carat Weight **0.50 CARAT**
 Color Grade **D**
 Clarity Grade **VVS 1**
 Cut Grade **IDEAL**
 Polish **EXCELLENT**
 Symmetry **EXCELLENT**
 Fluorescence **NONE**
 Inscription(s) **IGI LG776613709**

Comments: HEARTS & ARROWS As
 Grown - No indication of post-
 growth treatment. This Laboratory
 Grown Diamond was created by
 High Pressure High Temperature
 (HPHT) growth process. Type II



February 18, 2026
 IGI Report Number **LG776613709**
 ROUND BRILLIANT
 LABORATORY GROWN DIAMOND
 5.08 - 5.09 X 3.15 MM
 Carat Weight **0.50 CARAT**
 Color Grade **D**
 Clarity Grade **VVS 1**
 Cut Grade **IDEAL**
 Polish **EXCELLENT**
 Symmetry **EXCELLENT**
 Fluorescence **NONE**
 Inscription(s) **IGI LG776613709**

Comments: HEARTS & ARROWS As
 Grown - No indication of post-
 growth treatment. This Laboratory
 Grown Diamond was created by
 High Pressure High Temperature
 (HPHT) growth process. Type II

THIS DOCUMENT WAS PRODUCED WITH THE FOLLOWING SECURITY MEASURES: SPECIAL DOCUMENT PAPER, INK SCREENS, WATERMARK, BACKGROUND DESIGNS, HOLOGRAM AND OTHER SECURITY FEATURES NOT LISTED AND DO EXCEED DOCUMENT SECURITY INDUSTRY GUIDELINES.