



**ELECTRONIC COPY**

LG776611805  
Report verification at igi.org



February 20, 2026  
IGI Report Number **LG776611805**  
Description **LABORATORY GROWN DIAMOND**  
Shape and Cutting Style **CUSHION MODIFIED BRILLIANT**  
Measurements **7.75 X 5.51 X 3.67 MM**  
**GRADING RESULTS**  
Carat Weight **1.52 CARAT**  
Color Grade **FANCY LIGHT YELLOW**  
Clarity Grade **VS 1**

**LABORATORY GROWN DIAMOND REPORT**

February 20, 2026  
IGI Report Number **LG776611805**  
Description **LABORATORY GROWN DIAMOND**  
Shape and Cutting Style **CUSHION MODIFIED BRILLIANT**  
Measurements **7.75 X 5.51 X 3.67 MM**

**GRADING RESULTS**

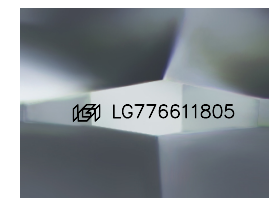
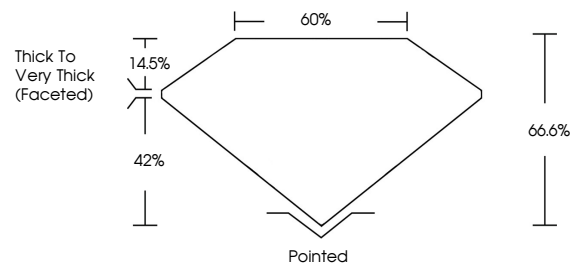
Carat Weight **1.52 CARAT**  
Color Grade **FANCY LIGHT YELLOW**  
Clarity Grade **VS 1**

**ADDITIONAL GRADING INFORMATION**

Polish **EXCELLENT**  
Symmetry **EXCELLENT**  
Fluorescence **NONE**  
Inscription(s) **IGI LG776611805**

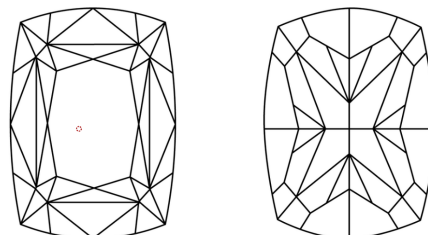
Comments: This Laboratory Grown Diamond was created by Chemical Vapor Deposition (CVD) growth process.

**PROPORTIONS**



Sample Image Used

**CLARITY CHARACTERISTICS**



**KEY TO SYMBOLS**

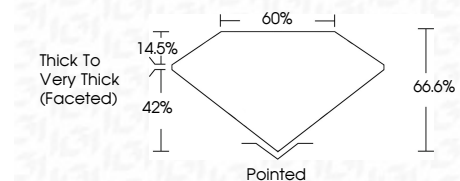
Red symbols indicate internal characteristics.  
Green symbols indicate external characteristics.

**COLOR**

D E F G H I J Faint Very Light Light

**CLARITY**

FL	IF	VS <sup>1-2</sup>	VS <sup>1-2</sup>	SI <sup>1-2</sup>	I <sup>1-3</sup>
Flawless	Internally Flawless	Very Very Slightly Included	Very Slightly Included	Slightly Included	Included



**ADDITIONAL GRADING INFORMATION**

Polish **EXCELLENT**  
Symmetry **EXCELLENT**  
Fluorescence **NONE**  
Inscription(s) **IGI LG776611805**  
Comments: This Laboratory Grown Diamond was created by Chemical Vapor Deposition (CVD) growth process.



February 20, 2026  
IGI Report No LG776611805  
**CUSHION MODIFIED BRILLIANT**  
1.52 CARAT  
Carat Weight  
Color Grade **FANCY LIGHT YELLOW**  
Clarity Grade **VS 1**  
Depth **66.6%**  
Table **42%**  
Girdle **Thick to Very Thick (Faceted)**  
Culet **Pointed**  
Polish **EXCELLENT**  
Symmetry **EXCELLENT**  
Fluorescence **NONE**  
Inscription(s) **IGI LG776611805**  
Comments: This Laboratory Grown Diamond was created by Chemical Vapor Deposition (CVD) growth process.