



March 2, 2026

IGI Report Number **LG776610442**

**PEAR MODIFIED BRILLIANT
LABORATORY GROWN DIAMOND**
7.60 X 4.74 X 3.23 MM

Carat Weight **0.90 CARAT**
Color Grade **FANCY VIVID PINK**
Clarity Grade **VS 1**
Polish **EXCELLENT**
Symmetry **VERY GOOD**
Fluorescence **SLIGHT**
Inscription(s) **IGI LG776610442**

Comments: This Laboratory Grown Diamond was created by Chemical Vapor Deposition (CVD) growth process. Indications of post-growth treatment.

LABORATORY GROWN DIAMOND REPORT

March 2, 2026

IGI Report Number

LG776610442

Description

LABORATORY GROWN DIAMOND

Shape and Cutting Style

PEAR MODIFIED BRILLIANT

Measurements

7.60 X 4.74 X 3.23 MM

GRADING RESULTS

Carat Weight

0.90 CARAT

Color Grade

FANCY VIVID PINK

Clarity Grade

VS 1

ADDITIONAL GRADING INFORMATION

Polish

EXCELLENT

Symmetry

VERY GOOD

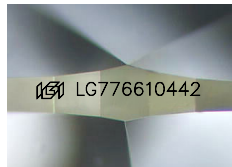
Fluorescence

SLIGHT

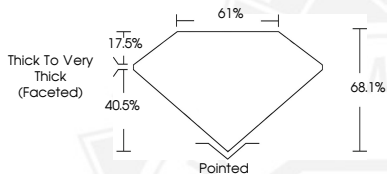
Inscription(s)

IGI LG776610442

Comments: This Laboratory Grown Diamond was created by Chemical Vapor Deposition (CVD) growth process. Indications of post-growth treatment.



Sample Image Used



March 2, 2026

IGI Report Number **LG776610442**

**PEAR MODIFIED BRILLIANT
LABORATORY GROWN DIAMOND**
7.60 X 4.74 X 3.23 MM

Carat Weight **0.90 CARAT**
Color Grade **FANCY VIVID PINK**
Clarity Grade **VS 1**
Polish **EXCELLENT**
Symmetry **VERY GOOD**
Fluorescence **SLIGHT**
Inscription(s) **IGI LG776610442**

Comments: This Laboratory Grown Diamond was created by Chemical Vapor Deposition (CVD) growth process. Indications of post-growth treatment.



THIS DOCUMENT WAS PRODUCED WITH THE FOLLOWING SECURITY MEASURES: SPECIAL DOCUMENT PAPER, INK SCREENS, WATERMARK, BACKGROUND DESIGNS, HOLOGRAM AND OTHER SECURITY FEATURES NOT LISTED AND DO EXCEED DOCUMENT SECURITY INDUSTRY GUIDELINES.