



ELECTRONIC COPY

LG776610425
Report verification at igi.org



February 27, 2026
IGI Report Number **LG776610425**
Description **LABORATORY GROWN DIAMOND**
Shape and Cutting Style **CUT CORNERED
RECTANGULAR MODIFIED
BRILLIANT**
Measurements **8.15 X 6.35 X 4.42 MM**
GRADING RESULTS
Carat Weight **2.13 CARATS**
Color Grade **FANCY VIVID PINK**
Clarity Grade **VS 1**

February 27, 2026
IGI Report Number **LG776610425**
Description **LABORATORY GROWN DIAMOND**
Shape and Cutting Style **CUT CORNERED RECTANGULAR
MODIFIED BRILLIANT**
Measurements **8.15 X 6.35 X 4.42 MM**

GRADING RESULTS

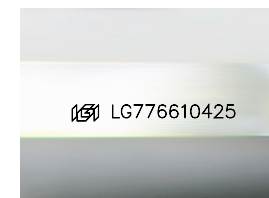
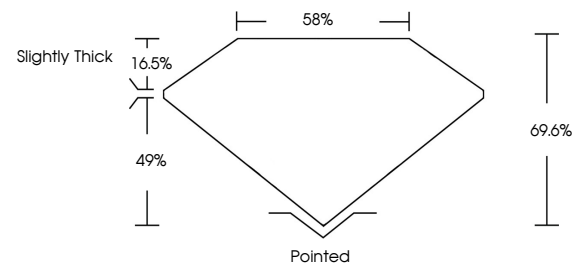
Carat Weight **2.13 CARATS**
Color Grade **FANCY VIVID PINK**
Clarity Grade **VS 1**

ADDITIONAL GRADING INFORMATION

Polish **EXCELLENT**
Symmetry **EXCELLENT**
Fluorescence **STRONG**
Inscription(s) **IGI LG776610425**

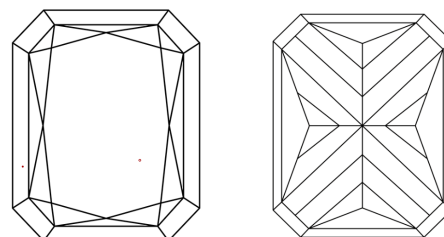
Comments: This Laboratory Grown Diamond was created by Chemical Vapor Deposition (CVD) growth process. Indications of post-growth treatment.

PROPORTIONS



Sample Image Used

CLARITY CHARACTERISTICS



KEY TO SYMBOLS

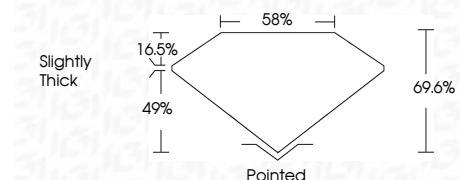
Red symbols indicate internal characteristics.
Green symbols indicate external characteristics.

COLOR

D E F G H I J Faint Very Light Light

CLARITY

FL	IF	VS ¹⁻²	VS ¹⁻²	SI ¹⁻²	I ¹⁻³
Flawless	Internally Flawless	Very Very Slightly Included	Very Slightly Included	Slightly Included	Included



ADDITIONAL GRADING INFORMATION

Polish **EXCELLENT**
Symmetry **EXCELLENT**
Fluorescence **STRONG**
Inscription(s) **IGI LG776610425**
Comments: This Laboratory Grown Diamond was created by Chemical Vapor Deposition (CVD) growth process. Indications of post-growth treatment.



February 27, 2026
IGI Report No LG776610425
CUT CORNERED RECT. MODIFIED BRILLIANT
8.15 X 6.35 X 4.42 MM
2.13 CARATS
FANCY VIVID PINK
VS 1
69.6%
85%
Slightly Thick
Pointed
EXCELLENT
EXCELLENT
STRONG
IGI LG776610425

Comments: This Laboratory Grown Diamond was created by Chemical Vapor Deposition (CVD) growth process. Indications of post-growth treatment.