



ELECTRONIC COPY

LG776609430
Report verification at igi.org



February 20, 2026
IGI Report Number **LG776609430**
Description **LABORATORY GROWN DIAMOND**
Shape and Cutting Style **CUT CORNERED
RECTANGULAR MODIFIED
BRILLIANT**
Measurements **8.51 X 6.13 X 4.12 MM**
GRADING RESULTS
Carat Weight **2.09 CARATS**
Color Grade **FANCY VIVID PINK**
Clarity Grade **VS 2**

February 20, 2026
IGI Report Number **LG776609430**
Description **LABORATORY GROWN DIAMOND**
Shape and Cutting Style **CUT CORNERED RECTANGULAR
MODIFIED BRILLIANT**
Measurements **8.51 X 6.13 X 4.12 MM**

GRADING RESULTS

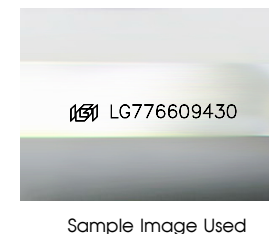
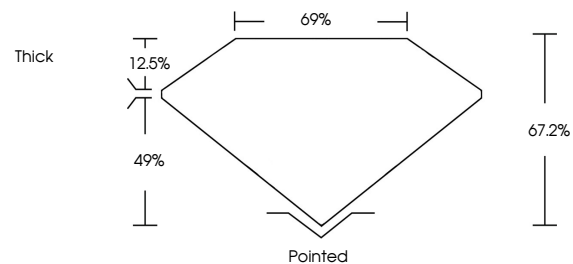
Carat Weight **2.09 CARATS**
Color Grade **FANCY VIVID PINK**
Clarity Grade **VS 2**

ADDITIONAL GRADING INFORMATION

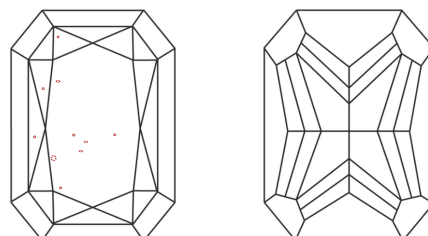
Polish **VERY GOOD**
Symmetry **VERY GOOD**
Fluorescence **SLIGHT**
Inscription(s) **IGI LG776609430**

Comments: This Laboratory Grown Diamond was created by Chemical Vapor Deposition (CVD) growth process. Indications of post-growth treatment.

PROPORTIONS



CLARITY CHARACTERISTICS



KEY TO SYMBOLS

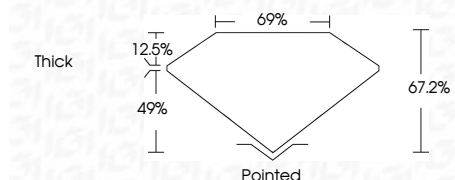
Red symbols indicate internal characteristics.
Green symbols indicate external characteristics.

COLOR

D E F G H I J Faint Very Light Light

CLARITY

FL	IF	VS ¹⁻²	VS ¹⁻²	SI ¹⁻²	I ¹⁻³
Flawless	Internally Flawless	Very Very Slightly Included	Very Slightly Included	Slightly Included	Included



ADDITIONAL GRADING INFORMATION

Polish **VERY GOOD**
Symmetry **VERY GOOD**
Fluorescence **SLIGHT**
Inscription(s) **IGI LG776609430**
Comments: This Laboratory Grown Diamond was created by Chemical Vapor Deposition (CVD) growth process. Indications of post-growth treatment.



February 20, 2026
IGI Report No **LG776609430**
CUT CORNERED RECT. MODIFIED BRILLIANT
8.51 X 6.13 X 4.12 MM
Carat Weight **2.09 CARATS**
Color Grade **FANCY VIVID PINK**
Clarity Grade **VS 2**
Depth **67.2%**
Table **69%**
Girdle **Thick**
Culet **Pointed**
Polish **VERY GOOD**
Symmetry **VERY GOOD**
Fluorescence **SLIGHT**
Inscription(s) **IGI LG776609430**
Comments: This Laboratory Grown Diamond was created by Chemical Vapor Deposition (CVD) growth process. Indications of post-growth treatment.