



ELECTRONIC COPY

LG776608821
Report verification at igi.org



February 24, 2026

IGI Report Number **LG776608821**

Description **LABORATORY GROWN DIAMOND**

Shape and Cutting Style **ROUND BRILLIANT**

Measurements **6.32 - 6.33 X 4.13 MM**

GRADING RESULTS

Carat Weight **1.01 CARAT**

Color Grade **G**

Clarity Grade **VS 1**

Cut Grade **VERY GOOD**

February 24, 2026

IGI Report Number **LG776608821**

Description **LABORATORY GROWN DIAMOND**

Shape and Cutting Style **ROUND BRILLIANT**

Measurements **6.32 - 6.33 X 4.13 MM**

GRADING RESULTS

Carat Weight **1.01 CARAT**

Color Grade **G**

Clarity Grade **VS 1**

Cut Grade **VERY GOOD**

ADDITIONAL GRADING INFORMATION

Polish **EXCELLENT**

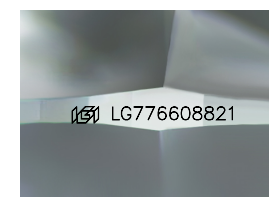
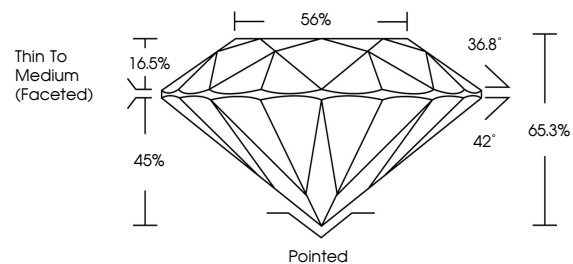
Symmetry **EXCELLENT**

Fluorescence **NONE**

Inscription(s) **IGI LG776608821**

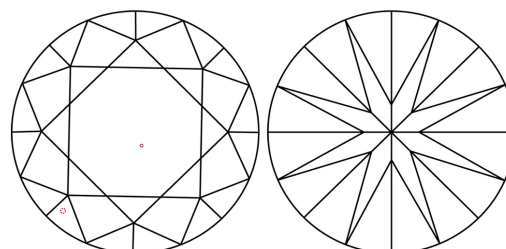
Comments: This Laboratory Grown Diamond was created by Chemical Vapor Deposition (CVD) growth process.
Type IIa

PROPORTIONS



Sample Image Used

CLARITY CHARACTERISTICS



KEY TO SYMBOLS

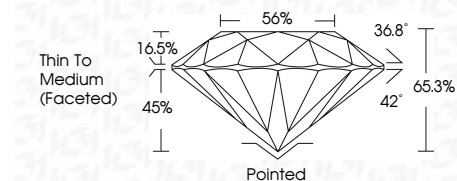
Red symbols indicate internal characteristics.
Green symbols indicate external characteristics.

COLOR

D E F G H I J Faint Very Light Light

CLARITY

FL	IF	VS ¹⁻²	VS ¹⁻²	SI ¹⁻²	I ¹⁻³
Flawless	Internally Flawless	Very Very Slightly Included	Very Slightly Included	Slightly Included	Included



ADDITIONAL GRADING INFORMATION

Polish **EXCELLENT**

Symmetry **EXCELLENT**

Fluorescence **NONE**

Inscription(s) **IGI LG776608821**

Comments: This Laboratory Grown Diamond was created by Chemical Vapor Deposition (CVD) growth process.
Type IIa



February 24, 2026	1.01 CARAT	G	VS 1	65.3%	56%	Pointed	EXCELLENT	EXCELLENT	NONE	IGI LG776608821
IGI Report No LG776608821	Carat Weight	Color Grade	Clarity Grade	Depth	Table	Girdle	Polish	Symmetry	Fluorescence	Inscription(s)
ROUND BRILLIANT	6.32 - 6.33 X 4.13 MM	VERY GOOD	VERY GOOD	65.3%	56%	Thin To Medium (Faceted)	EXCELLENT	EXCELLENT	NONE	IGI LG776608821

Comments: This Laboratory Grown Diamond was created by Chemical Vapor Deposition (CVD) growth process.
Type IIa