



ELECTRONIC COPY

LG776607926
Report verification at igi.org



February 23, 2026

IGI Report Number **LG776607926**

Description **LABORATORY GROWN DIAMOND**

Shape and Cutting Style **ROUND BRILLIANT**

Measurements **8.28 - 8.31 X 5.10 MM**

GRADING RESULTS

Carat Weight **2.15 CARATS**

Color Grade **E**

Clarity Grade **VS 1**

Cut Grade **IDEAL**

February 23, 2026

IGI Report Number **LG776607926**

Description **LABORATORY GROWN DIAMOND**

Shape and Cutting Style **ROUND BRILLIANT**

Measurements **8.28 - 8.31 X 5.10 MM**

GRADING RESULTS

Carat Weight **2.15 CARATS**

Color Grade **E**

Clarity Grade **VS 1**

Cut Grade **IDEAL**

ADDITIONAL GRADING INFORMATION

Polish **EXCELLENT**

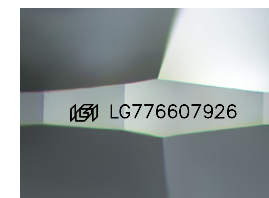
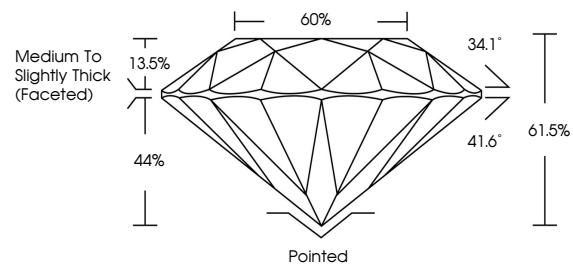
Symmetry **EXCELLENT**

Fluorescence **NONE**

Inscription(s) **IGI LG776607926**

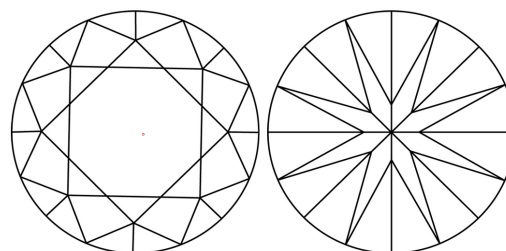
Comments: This Laboratory Grown Diamond was created by Chemical Vapor Deposition (CVD) growth process. Type IIa

PROPORTIONS



Sample Image Used

CLARITY CHARACTERISTICS



KEY TO SYMBOLS

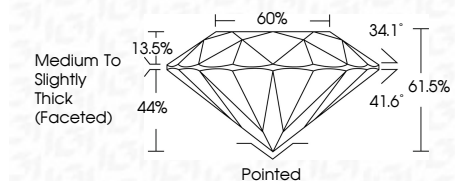
Red symbols indicate internal characteristics.
Green symbols indicate external characteristics.

COLOR

D E F G H I J Faint Very Light Light

CLARITY

FL	IF	VS ¹⁻²	VS ¹⁻²	SI ¹⁻²	I ¹⁻³
Flawless	Internally Flawless	Very Very Slightly Included	Very Slightly Included	Slightly Included	Included



ADDITIONAL GRADING INFORMATION

Polish **EXCELLENT**

Symmetry **EXCELLENT**

Fluorescence **NONE**

Inscription(s) **IGI LG776607926**

Comments: This Laboratory Grown Diamond was created by Chemical Vapor Deposition (CVD) growth process. Type IIa



IGI



February 23, 2026	IGI Report No LG776607926	2.15 CARATS	E	VS 1	IDEAL	61.5%	60%	Medium To Slightly Thick (Faceted)	Pointed	EXCELLENT	EXCELLENT	NONE	IGI LG776607926
IGI Report No LG776607926	ROUND BRILLIANT	8.28 - 8.31 X 5.10 MM	Color Grade	Clarity Grade	Cut Grade	Depth	Table	Graile	Culet	Polish	Symmetry	Fluorescence	Inscription(s)

Comments: This Laboratory Grown Diamond was created by Chemical Vapor Deposition (CVD) growth process. Type IIa