



ELECTRONIC COPY

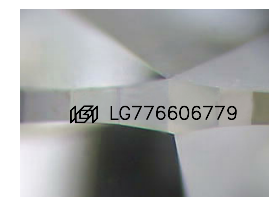
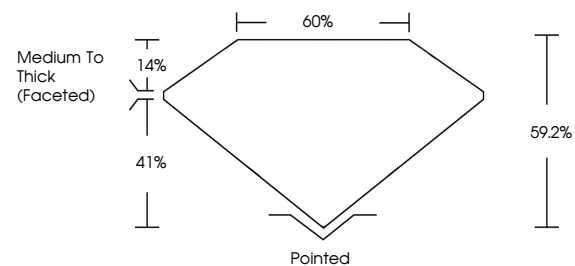
LG776606779
Report verification at igi.org



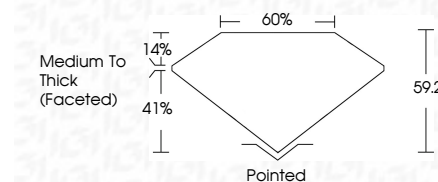
March 4, 2026
IGI Report Number **LG776606779**
Description **LABORATORY GROWN DIAMOND**
Shape and Cutting Style **OVAL BRILLIANT**
Measurements **12.10 X 8.44 X 5.00 MM**
GRADING RESULTS
Carat Weight **3.27 CARATS**
Color Grade **E**
Clarity Grade **VS 1**

March 4, 2026
IGI Report Number **LG776606779**
Description **LABORATORY GROWN DIAMOND**
Shape and Cutting Style **OVAL BRILLIANT**
Measurements **12.10 X 8.44 X 5.00 MM**
GRADING RESULTS
Carat Weight **3.27 CARATS**
Color Grade **E**
Clarity Grade **VS 1**

PROPORTIONS



Sample Image Used



ADDITIONAL GRADING INFORMATION

Polish **EXCELLENT**
Symmetry **EXCELLENT**
Fluorescence **NONE**
Inscription(s) **IGI LG776606779**

Comments: This Laboratory Grown Diamond was created by Chemical Vapor Deposition (CVD) growth process.
Type IIa

ADDITIONAL GRADING INFORMATION

Polish **EXCELLENT**
Symmetry **EXCELLENT**
Fluorescence **NONE**
Inscription(s) **IGI LG776606779**
Comments: This Laboratory Grown Diamond was created by Chemical Vapor Deposition (CVD) growth process.
Type IIa

COLOR

D E F G H I J Faint Very Light Light

CLARITY

FL	IF	VS ¹⁻²	VS ¹⁻²	SI ¹⁻²	I ¹⁻³
Flawless	Internally Flawless	Very Very Slightly Included	Very Slightly Included	Slightly Included	Included



IGI

March 4, 2026
IGI Report No **LG776606779**
OVAL BRILLIANT
12.10 X 8.44 X 5.00 MM
Carat Weight **3.27 CARATS**
Color Grade **E**
Clarity Grade **VS 1**
Depth **59.2%**
Table **60%**
Girdle **Medium To Thick (Faceted)**
Culet **Pointed**
Polish **EXCELLENT**
Symmetry **EXCELLENT**
Fluorescence **NONE**
Inscription(s) **IGI LG776606779**

Comments: This Laboratory Grown Diamond was created by Chemical Vapor Deposition (CVD) growth process.
Type IIa