



ELECTRONIC COPY

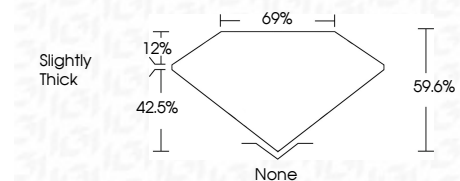
LG776604170
Report verification at igi.org



February 22, 2026
IGI Report Number **LG776604170**
Description **LABORATORY GROWN DIAMOND**
Shape and Cutting Style **DECAGONAL STEP CUT**
Measurements **11.45 X 5.47 X 3.26 MM**

GRADING RESULTS

Carat Weight **1.67 CARAT**
Color Grade **F**
Clarity Grade **VVS 2**



ADDITIONAL GRADING INFORMATION

Polish **EXCELLENT**
Symmetry **EXCELLENT**
Fluorescence **NONE**
Inscription(s) **IGI LG776604170**
Comments: This Laboratory Grown Diamond was created by Chemical Vapor Deposition (CVD) growth process. Type IIa



February 22, 2026
IGI Report No LG776604170
DECAGONAL STEP CUT
11.45 X 5.47 X 3.26 MM
1.67 CARAT
Color Grade **F**
Clarity Grade **VVS 2**
Depth **69.6%**
Table **69%**
Girdle **Slightly Thick**
Culet **None**
Polish **EXCELLENT**
Symmetry **EXCELLENT**
Fluorescence **NONE**
Inscription(s) **IGI LG776604170**
Comments: This Laboratory Grown Diamond was created by Chemical Vapor Deposition (CVD) growth process. Type IIa

LABORATORY GROWN DIAMOND REPORT

February 22, 2026
IGI Report Number **LG776604170**
Description **LABORATORY GROWN DIAMOND**
Shape and Cutting Style **DECAGONAL STEP CUT**
Measurements **11.45 X 5.47 X 3.26 MM**

GRADING RESULTS

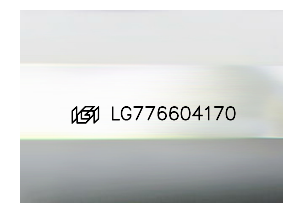
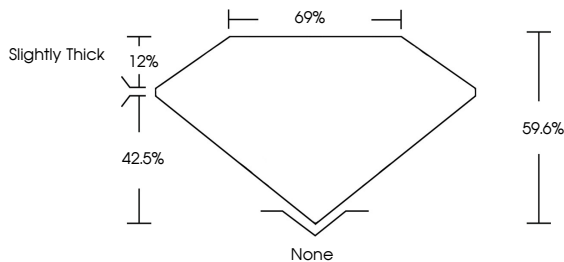
Carat Weight **1.67 CARAT**
Color Grade **F**
Clarity Grade **VVS 2**

ADDITIONAL GRADING INFORMATION

Polish **EXCELLENT**
Symmetry **EXCELLENT**
Fluorescence **NONE**
Inscription(s) **IGI LG776604170**

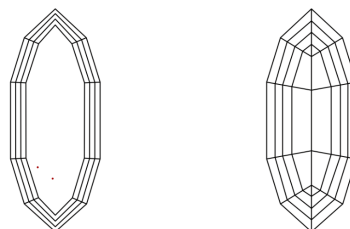
Comments: This Laboratory Grown Diamond was created by Chemical Vapor Deposition (CVD) growth process. Type IIa

PROPORTIONS



Sample Image Used

CLARITY CHARACTERISTICS



KEY TO SYMBOLS

Red symbols indicate internal characteristics.
Green symbols indicate external characteristics.

COLOR

D	E	F	G	H	I	J	Faint	Very Light	Light
---	---	---	---	---	---	---	-------	------------	-------

CLARITY

FL	IF	VVS ¹⁻²	VS ¹⁻²	SI ¹⁻²	I ¹⁻³
Flawless	Internally Flawless	Very Very Slightly Included	Very Slightly Included	Slightly Included	Included

