



**ELECTRONIC COPY**

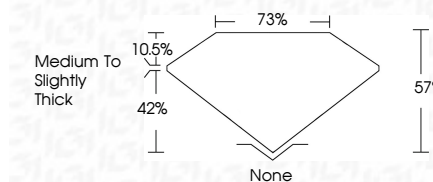
LG776604159  
Report verification at igi.org



February 23, 2026  
IGI Report Number **LG776604159**  
Description **LABORATORY GROWN DIAMOND**

Shape and Cutting Style **DECAGONAL STEP CUT**  
Measurements **11.31 X 5.47 X 3.12 MM**

**GRADING RESULTS**  
Carat Weight **1.59 CARAT**  
Color Grade **E**  
Clarity Grade **VVS 1**



**ADDITIONAL GRADING INFORMATION**  
Polish **EXCELLENT**  
Symmetry **EXCELLENT**  
Fluorescence **NONE**  
Inscription(s) **IGI LG776604159**  
Comments: This Laboratory Grown Diamond was created by Chemical Vapor Deposition (CVD) growth process. Type IIa



February 23, 2026  
IGI Report No **LG776604159**  
**DECAGONAL STEP CUT**  
11.31 X 5.47 X 3.12 MM  
1.59 CARAT  
E  
VVS 1  
73%  
57%  
42%  
10.5%  
None  
None  
EXCELLENT  
EXCELLENT  
NONE  
IGI LG776604159  
Comments: This Laboratory Grown Diamond was created by Chemical Vapor Deposition (CVD) growth process. Type IIa

**LABORATORY GROWN DIAMOND REPORT**

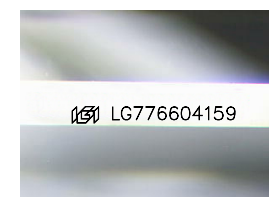
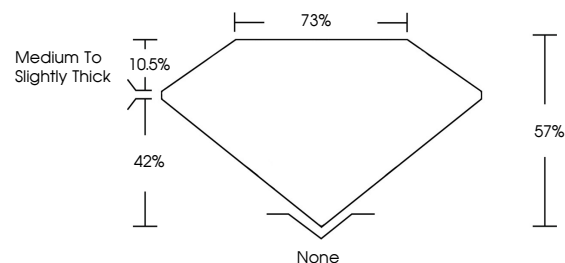
February 23, 2026  
IGI Report Number **LG776604159**  
Description **LABORATORY GROWN DIAMOND**  
Shape and Cutting Style **DECAGONAL STEP CUT**  
Measurements **11.31 X 5.47 X 3.12 MM**

**GRADING RESULTS**  
Carat Weight **1.59 CARAT**  
Color Grade **E**  
Clarity Grade **VVS 1**

**ADDITIONAL GRADING INFORMATION**  
Polish **EXCELLENT**  
Symmetry **EXCELLENT**  
Fluorescence **NONE**  
Inscription(s) **IGI LG776604159**

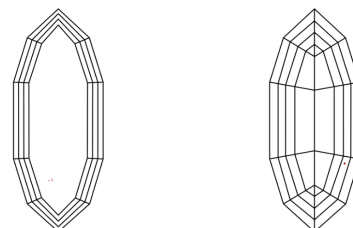
Comments: This Laboratory Grown Diamond was created by Chemical Vapor Deposition (CVD) growth process. Type IIa

**PROPORTIONS**



Sample Image Used

**CLARITY CHARACTERISTICS**



**KEY TO SYMBOLS**

Red symbols indicate internal characteristics.  
Green symbols indicate external characteristics.

**COLOR**

D E F G H I J Faint Very Light Light

**CLARITY**

FL	IF	VVS <sup>1-2</sup>	VS <sup>1-2</sup>	SI <sup>1-2</sup>	I <sup>1-3</sup>
Flawless	Internally Flawless	Very Very Slightly Included	Very Slightly Included	Slightly Included	Included

