



February 26, 2026

IGI Report Number **LG775643450**

**ROUND BRILLIANT
LABORATORY GROWN DIAMOND
6.29 - 6.32 X 3.74 MM**

Carat Weight	0.91 CARAT
Color Grade	D
Clarity Grade	VS 1
Cut Grade	VERY GOOD
Polish	VERY GOOD
Symmetry	GOOD
Fluorescence	NONE
Inscription(s)	IGI LG775643450

Comments: As Grown - No indication of post-growth treatment. This Laboratory Grown Diamond was created by High Pressure High Temperature (HPHT) growth process. Type II

LABORATORY GROWN DIAMOND REPORT

February 26, 2026

IGI Report Number

LG775643450

Description

LABORATORY GROWN DIAMOND

Shape and Cutting Style

ROUND BRILLIANT

Measurements

6.29 - 6.32 X 3.74 MM

GRADING RESULTS

Carat Weight

0.91 CARAT

Color Grade

D

Clarity Grade

VS 1

Cut Grade

VERY GOOD

ADDITIONAL GRADING INFORMATION

Polish

VERY GOOD

Symmetry

GOOD

Fluorescence

NONE

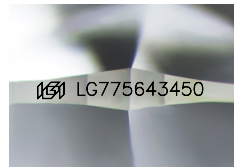
Inscription(s)

IGI LG775643450

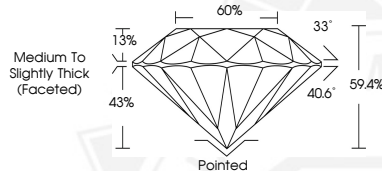
Comments: As Grown - No indication of post-growth treatment.

This Laboratory Grown Diamond was created by High Pressure High Temperature (HPHT) growth process.

Type II



Sample Image Used



February 26, 2026

IGI Report Number **LG775643450**

**ROUND BRILLIANT
LABORATORY GROWN DIAMOND
6.29 - 6.32 X 3.74 MM**

Carat Weight	0.91 CARAT
Color Grade	D
Clarity Grade	VS 1
Cut Grade	VERY GOOD
Polish	VERY GOOD
Symmetry	GOOD
Fluorescence	NONE
Inscription(s)	IGI LG775643450

Comments: As Grown - No indication of post-growth treatment. This Laboratory Grown Diamond was created by High Pressure High Temperature (HPHT) growth process. Type II



THIS DOCUMENT WAS PRODUCED WITH THE FOLLOWING SECURITY MEASURES: SPECIAL DOCUMENT PAPER, INK SCREENS, WATERMARK, BACKGROUND DESIGNS, HOLOGRAM AND OTHER SECURITY FEATURES NOT LISTED AND DO EXCEED DOCUMENT SECURITY INDUSTRY GUIDELINES.