



ELECTRONIC COPY

LABORATORY GROWN DIAMOND REPORT

February 16, 2026  
IGI Report Number LG775639074  
Description LABORATORY GROWN DIAMOND  
Shape and Cutting Style PRINCESS CUT  
Measurements 6.94 X 6.94 X 4.95 MM

GRADING RESULTS

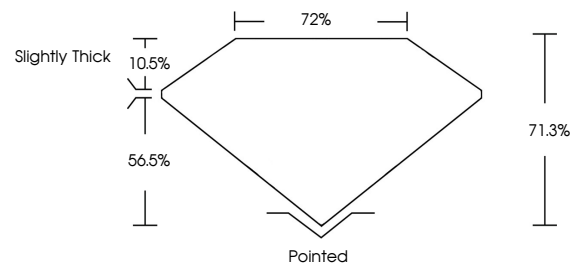
Carat Weight 2.07 CARATS  
Color Grade E  
Clarity Grade VVS 1

ADDITIONAL GRADING INFORMATION

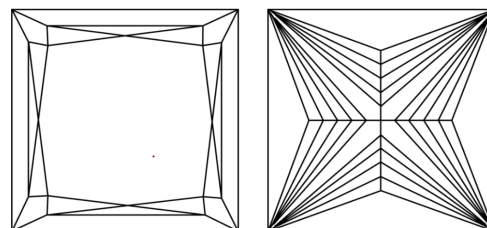
Polish EXCELLENT  
Symmetry EXCELLENT  
Fluorescence NONE  
Inscription(s) IGI LG775639074

Comments: This Laboratory Grown Diamond was created by Chemical Vapor Deposition (CVD) growth process.  
Type IIa

PROPORTIONS

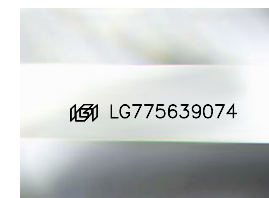


CLARITY CHARACTERISTICS



KEY TO SYMBOLS

Red symbols indicate internal characteristics.  
Green symbols indicate external characteristics.



Sample Image Used

COLOR

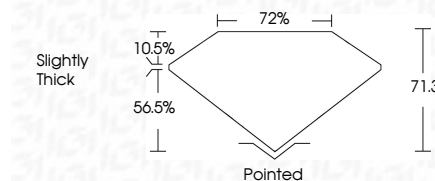
D E F G H I J Faint Very Light Light

CLARITY

FL IF VS<sup>1-2</sup> VS<sup>1-2</sup> SI<sup>1-2</sup> I<sup>1-3</sup>  
Flawless Internally Flawless Very Very Slightly Included Very Slightly Included Slightly Included Included



February 16, 2026  
IGI Report Number LG775639074  
Description LABORATORY GROWN DIAMOND  
Shape and Cutting Style PRINCESS CUT  
Measurements 6.94 X 6.94 X 4.95 MM  
GRADING RESULTS  
Carat Weight 2.07 CARATS  
Color Grade E  
Clarity Grade VVS 1



ADDITIONAL GRADING INFORMATION

Polish EXCELLENT  
Symmetry EXCELLENT  
Fluorescence NONE  
Inscription(s) IGI LG775639074  
Comments: This Laboratory Grown Diamond was created by Chemical Vapor Deposition (CVD) growth process.  
Type IIa



IGI



February 16, 2026  
IGI Report No LG775639074  
PRINCESS CUT  
6.94 X 6.94 X 4.95 MM  
2.07 CARATS  
E  
Color Grade  
VVS 1  
Clarity Grade  
71.0%  
72%  
Slightly Thick  
Pointed  
EXCELLENT  
EXCELLENT  
NONE  
IGI LG775639074  
Comments: This Laboratory Grown Diamond was created by Chemical Vapor Deposition (CVD) growth process.  
Type IIa

