



**ELECTRONIC COPY**

LG775638915  
Report verification at igi.org



February 18, 2026

IGI Report Number **LG775638915**

Description **LABORATORY GROWN DIAMOND**

Shape and Cutting Style **ROUND BRILLIANT**

Measurements **8.32 - 8.37 X 4.93 MM**

**GRADING RESULTS**

Carat Weight **2.12 CARATS**

Color Grade **G**

Clarity Grade **VS 1**

Cut Grade **VERY GOOD**

February 18, 2026

IGI Report Number **LG775638915**

Description **LABORATORY GROWN DIAMOND**

Shape and Cutting Style **ROUND BRILLIANT**

Measurements **8.32 - 8.37 X 4.93 MM**

**GRADING RESULTS**

Carat Weight **2.12 CARATS**

Color Grade **G**

Clarity Grade **VS 1**

Cut Grade **VERY GOOD**

**ADDITIONAL GRADING INFORMATION**

Polish **GOOD**

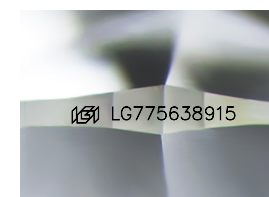
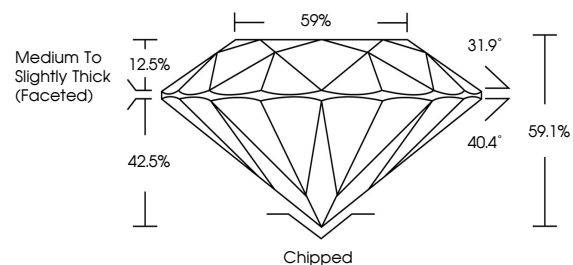
Symmetry **EXCELLENT**

Fluorescence **NONE**

Inscription(s) **IGI LG775638915**

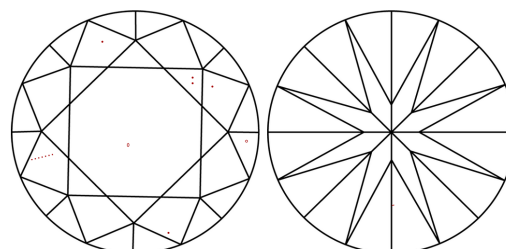
Comments: This Laboratory Grown Diamond was created by Chemical Vapor Deposition (CVD) growth process.  
Type IIa

**PROPORTIONS**



Sample Image Used

**CLARITY CHARACTERISTICS**



**KEY TO SYMBOLS**

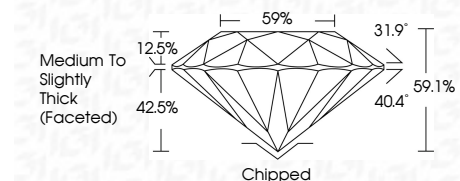
Red symbols indicate internal characteristics.  
Green symbols indicate external characteristics.

**COLOR**

D E F G H I J Faint Very Light Light

**CLARITY**

FL	IF	VS <sup>1-2</sup>	VS <sup>1-2</sup>	SI <sup>1-2</sup>	I <sup>1-3</sup>
Flawless	Internally Flawless	Very Very Slightly Included	Very Slightly Included	Slightly Included	Included



**ADDITIONAL GRADING INFORMATION**

Polish **GOOD**

Symmetry **EXCELLENT**

Fluorescence **NONE**

Inscription(s) **IGI LG775638915**

Comments: This Laboratory Grown Diamond was created by Chemical Vapor Deposition (CVD) growth process.  
Type IIa



**IGI**



February 18, 2026	IGI Report No LG775638915	ROUND BRILLIANT	2.12 CARATS	G	VS 1	VERY GOOD	59.1%	59%	Medium To Slightly Thick (Faceted)	Chipped	GOOD	EXCELLENT	NONE	IGI LG775638915
			8.32 - 8.37 X 4.93 MM											

Comments: This Laboratory Grown Diamond was created by Chemical Vapor Deposition (CVD) growth process.  
Type IIa