



ELECTRONIC COPY

LG775637726
Report verification at igi.org



February 19, 2026

IGI Report Number **LG775637726**

Description **LABORATORY GROWN DIAMOND**

Shape and Cutting Style **ROUND BRILLIANT**

Measurements **6.44 - 6.48 X 4.03 MM**

GRADING RESULTS

Carat Weight **1.05 CARAT**

Color Grade **E**

Clarity Grade **VVS 2**

Cut Grade **EXCELLENT**

February 19, 2026

IGI Report Number **LG775637726**

Description **LABORATORY GROWN DIAMOND**

Shape and Cutting Style **ROUND BRILLIANT**

Measurements **6.44 - 6.48 X 4.03 MM**

GRADING RESULTS

Carat Weight **1.05 CARAT**

Color Grade **E**

Clarity Grade **VVS 2**

Cut Grade **EXCELLENT**

ADDITIONAL GRADING INFORMATION

Polish **EXCELLENT**

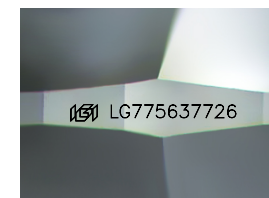
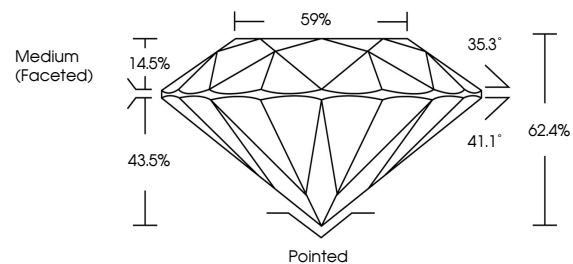
Symmetry **EXCELLENT**

Fluorescence **NONE**

Inscription(s) **IGI LG775637726**

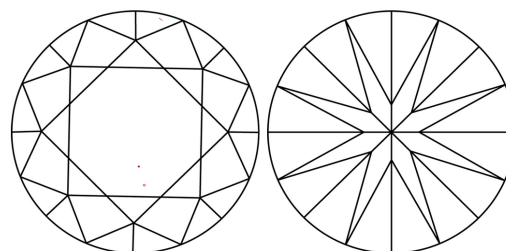
Comments: This Laboratory Grown Diamond was created by Chemical Vapor Deposition (CVD) growth process.
Type IIa

PROPORTIONS



Sample Image Used

CLARITY CHARACTERISTICS



KEY TO SYMBOLS

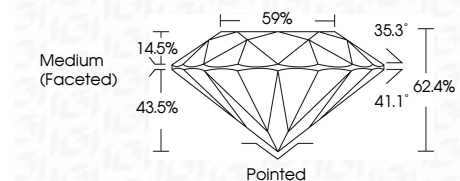
Red symbols indicate internal characteristics.
Green symbols indicate external characteristics.

COLOR

D E F G H I J Faint Very Light Light

CLARITY

FL	IF	VVS ¹⁻²	VS ¹⁻²	SI ¹⁻²	I ¹⁻³
Flawless	Internally Flawless	Very Very Slightly Included	Very Slightly Included	Slightly Included	Included



ADDITIONAL GRADING INFORMATION

Polish **EXCELLENT**

Symmetry **EXCELLENT**

Fluorescence **NONE**

Inscription(s) **IGI LG775637726**

Comments: This Laboratory Grown Diamond was created by Chemical Vapor Deposition (CVD) growth process.
Type IIa



IGI



February 19, 2026
IGI Report No LG775637726
ROUND BRILLIANT
6.44 - 6.48 X 4.03 MM
1.05 CARAT
E
VVS 2
EXCELLENT
62.4%
59%
Medium (Faceted)
Pointed
EXCELLENT
EXCELLENT
NONE
IGI LG775637726
Comments: This Laboratory Grown Diamond was created by Chemical Vapor Deposition (CVD) growth process.
Type IIa