



**ELECTRONIC COPY**

LG775636672  
Report verification at igi.org



February 16, 2026

IGI Report Number **LG775636672**

Description **LABORATORY GROWN DIAMOND**

Shape and Cutting Style **OPTICA STELO (ROUND  
MODIFIED BRILLIANT)**

Measurements **9.86 - 9.94 X 6.32 MM**

**GRADING RESULTS**

Carat Weight **3.84 CARATS**

Color Grade **D**

Clarity Grade **VS 1**

Cut Grade **EXCELLENT**

February 16, 2026  
IGI Report Number **LG775636672**  
Description **LABORATORY GROWN DIAMOND**  
Shape and Cutting Style **OPTICA STELO (ROUND  
MODIFIED BRILLIANT)**  
Measurements **9.86 - 9.94 X 6.32 MM**

**GRADING RESULTS**

Carat Weight **3.84 CARATS**

Color Grade **D**

Clarity Grade **VS 1**

Cut Grade **EXCELLENT**

**ADDITIONAL GRADING INFORMATION**

Polish **EXCELLENT**

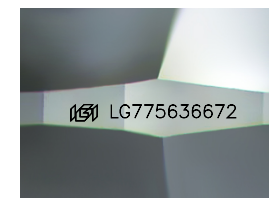
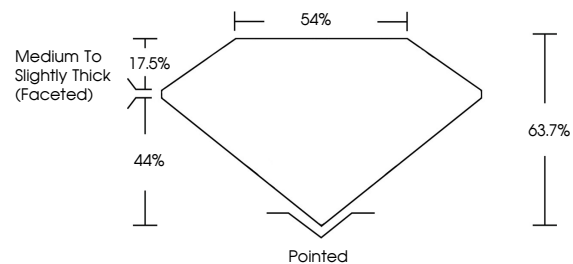
Symmetry **EXCELLENT**

Fluorescence **NONE**

Inscription(s) **IGI LG775636672**

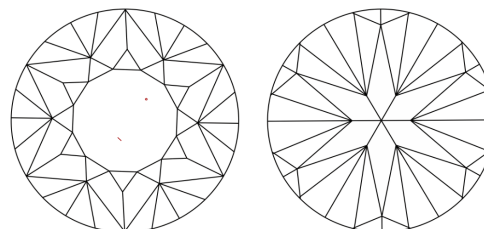
Comments: This Laboratory Grown Diamond was created by Chemical Vapor Deposition (CVD) growth process. Type IIa

**PROPORTIONS**



Sample Image Used

**CLARITY CHARACTERISTICS**



**KEY TO SYMBOLS**

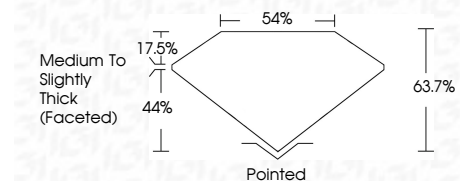
Red symbols indicate internal characteristics.  
Green symbols indicate external characteristics.

**COLOR**

D E F G H I J Faint Very Light Light

**CLARITY**

FL	IF	VS <sup>1-2</sup>	VS <sup>1-2</sup>	SI <sup>1-2</sup>	I <sup>1-3</sup>
Flawless	Internally Flawless	Very Very Slightly Included	Very Slightly Included	Slightly Included	Included



**ADDITIONAL GRADING INFORMATION**

Polish **EXCELLENT**

Symmetry **EXCELLENT**

Fluorescence **NONE**

Inscription(s) **IGI LG775636672**

Comments: This Laboratory Grown Diamond was created by Chemical Vapor Deposition (CVD) growth process. Type IIa



**IGI**



February 16, 2026  
IGI Report No LG775636672  
**OPTICA STELO (ROUND MODIFIED BRILLIANT)**  
9.86 - 9.94 X 6.32 MM  
3.84 CARATS  
D  
EXCELLENT  
EXCELLENT  
54%  
Medium To Slightly Thick (Faceted)  
Pointed  
EXCELLENT  
EXCELLENT  
NONE  
IGI LG775636672  
Comments: This Laboratory Grown Diamond was created by Chemical Vapor Deposition (CVD) growth process. Type IIa