



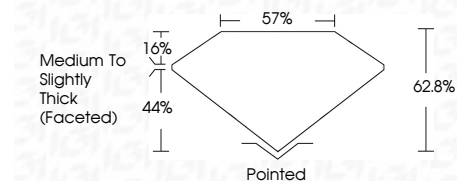
ELECTRONIC COPY

LG775636671
Report verification at igi.org



February 16, 2026
IGI Report Number **LG775636671**
Description **LABORATORY GROWN DIAMOND**
Shape and Cutting Style **OPTICA STELO (ROUND MODIFIED BRILLIANT)**
Measurements **9.85 - 9.92 X 6.20 MM**

GRADING RESULTS
Carat Weight **3.79 CARATS**
Color Grade **D**
Clarity Grade **VVS 2**
Cut Grade **EXCELLENT**



ADDITIONAL GRADING INFORMATION
Polish **EXCELLENT**
Symmetry **EXCELLENT**
Fluorescence **NONE**
Inscription(s) **(IGI) LG775636671**
Comments: This Laboratory Grown Diamond was created by Chemical Vapor Deposition (CVD) growth process. Type IIa



February 16, 2026
IGI Report No LG775636671
OPTICA STELO (ROUND MODIFIED BRILLIANT)
9.85 - 9.92 X 6.20 MM
3.79 CARATS
D
VVS 2
EXCELLENT
62.8%
57%
Medium To Slightly Thick (Faceted)
Pointed
EXCELLENT
EXCELLENT
NONE
IGI LG775636671
Comments: This Laboratory Grown Diamond was created by Chemical Vapor Deposition (CVD) growth process. Type IIa

LABORATORY GROWN DIAMOND REPORT

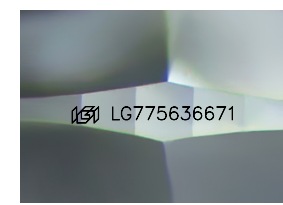
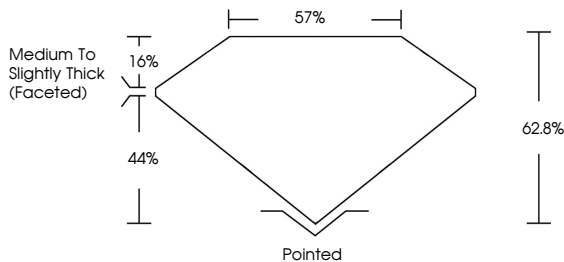
February 16, 2026
IGI Report Number **LG775636671**
Description **LABORATORY GROWN DIAMOND**
Shape and Cutting Style **OPTICA STELO (ROUND MODIFIED BRILLIANT)**
Measurements **9.85 - 9.92 X 6.20 MM**

GRADING RESULTS
Carat Weight **3.79 CARATS**
Color Grade **D**
Clarity Grade **VVS 2**
Cut Grade **EXCELLENT**

ADDITIONAL GRADING INFORMATION
Polish **EXCELLENT**
Symmetry **EXCELLENT**
Fluorescence **NONE**
Inscription(s) **(IGI) LG775636671**

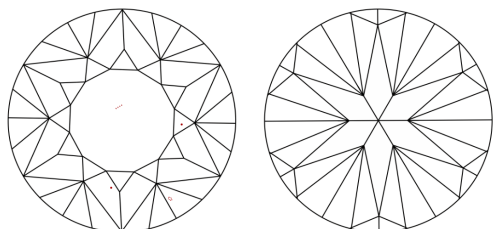
Comments: This Laboratory Grown Diamond was created by Chemical Vapor Deposition (CVD) growth process. Type IIa

PROPORTIONS



Sample Image Used

CLARITY CHARACTERISTICS



KEY TO SYMBOLS
Red symbols indicate internal characteristics.
Green symbols indicate external characteristics.

COLOR

D	E	F	G	H	I	J	Faint	Very Light	Light
---	---	---	---	---	---	---	-------	------------	-------

CLARITY

FL	IF	VVS ¹⁻²	VS ¹⁻²	SI ¹⁻²	I ¹⁻³
Flawless	Internally Flawless	Very Very Slightly Included	Very Slightly Included	Slightly Included	Included

