



**INTERNATIONAL  
GEMOLOGICAL  
INSTITUTE**

**ELECTRONIC COPY**

**LABORATORY GROWN DIAMOND REPORT**

February 16, 2026  
 IGI Report Number **LG775634154**  
 Description **LABORATORY GROWN DIAMOND**  
 Shape and Cutting Style **MARQUISE BRILLIANT**  
 Measurements **7.62 X 3.99 X 2.53 MM**

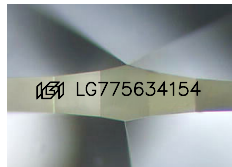
**GRADING RESULTS**

Carat Weight **0.44 CARAT**  
 Color Grade **D**  
 Clarity Grade **VVS 2**

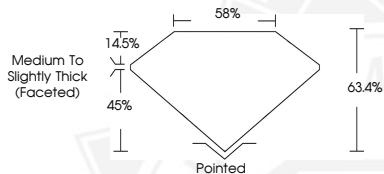
**ADDITIONAL GRADING INFORMATION**

Polish **EXCELLENT**  
 Symmetry **EXCELLENT**  
 Fluorescence **NONE**  
 Inscription(s) **IGI LG775634154**

Comments: This Laboratory Grown Diamond was created by Chemical Vapor Deposition (CVD) growth process. Type IIa



Sample Image Used



February 16, 2026  
 IGI Report Number **LG775634154**  
**MARQUISE BRILLIANT**  
**LABORATORY GROWN DIAMOND**  
**7.62 X 3.99 X 2.53 MM**  
 Carat Weight **0.44 CARAT**  
 Color Grade **D**  
 Clarity Grade **VVS 2**  
 Polish **EXCELLENT**  
 Symmetry **EXCELLENT**  
 Fluorescence **NONE**  
 Inscription(s) **IGI LG775634154**

Comments: This Laboratory Grown Diamond was created by Chemical Vapor Deposition (CVD) growth process. Type IIa



February 16, 2026  
 IGI Report Number **LG775634154**  
**MARQUISE BRILLIANT**  
**LABORATORY GROWN DIAMOND**  
**7.62 X 3.99 X 2.53 MM**  
 Carat Weight **0.44 CARAT**  
 Color Grade **D**  
 Clarity Grade **VVS 2**  
 Polish **EXCELLENT**  
 Symmetry **EXCELLENT**  
 Fluorescence **NONE**  
 Inscription(s) **IGI LG775634154**

Comments: This Laboratory Grown Diamond was created by Chemical Vapor Deposition (CVD) growth process. Type IIa



THIS DOCUMENT WAS PRODUCED WITH THE FOLLOWING SECURITY MEASURES: SPECIAL DOCUMENT PAPER, INK SCREENS, WATERMARK, BACKGROUND DESIGNS, HOLOGRAM AND OTHER SECURITY FEATURES NOT LISTED AND DO EXCEED DOCUMENT SECURITY INDUSTRY GUIDELINES.

For terms & conditions and to verify this report, please visit [www.igi.org](http://www.igi.org)