



ELECTRONIC COPY

LG775633727
Report verification at igi.org



February 20, 2026

IGI Report Number **LG775633727**

Description **LABORATORY GROWN DIAMOND**

Shape and Cutting Style **CUT CORNERED
RECTANGULAR MODIFIED
BRILLIANT**

Measurements **10.71 X 7.15 X 5.07 MM**

GRADING RESULTS

Carat Weight **3.57 CARATS**

Color Grade **FANCY INTENSE YELLOW**

Clarity Grade **VS 1**

LABORATORY GROWN DIAMOND REPORT

February 20, 2026

IGI Report Number **LG775633727**

Description **LABORATORY GROWN DIAMOND**

Shape and Cutting Style **CUT CORNERED RECTANGULAR
MODIFIED BRILLIANT**

Measurements **10.71 X 7.15 X 5.07 MM**

GRADING RESULTS

Carat Weight **3.57 CARATS**

Color Grade **FANCY INTENSE YELLOW**

Clarity Grade **VS 1**

ADDITIONAL GRADING INFORMATION

Polish **EXCELLENT**

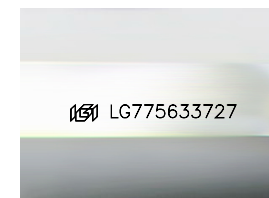
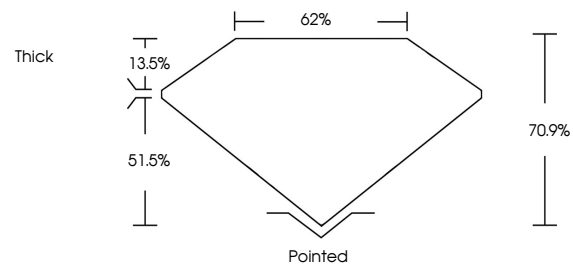
Symmetry **EXCELLENT**

Fluorescence **NONE**

Inscription(s) **IGI LG775633727**

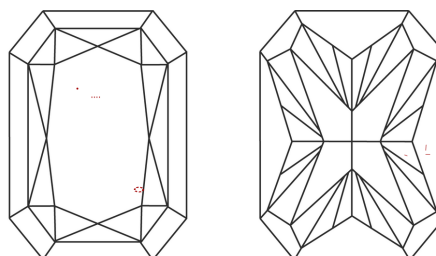
Comments: This Laboratory Grown Diamond was created by Chemical Vapor Deposition (CVD) growth process.

PROPORTIONS



Sample Image Used

CLARITY CHARACTERISTICS



KEY TO SYMBOLS

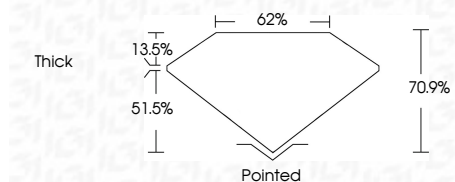
Red symbols indicate internal characteristics.
Green symbols indicate external characteristics.

COLOR

D E F G H I J Faint Very Light Light

CLARITY

FL	IF	VS ¹⁻²	VS ¹⁻²	SI ¹⁻²	I ¹⁻³
Flawless	Internally Flawless	Very Very Slightly Included	Very Slightly Included	Slightly Included	Included



ADDITIONAL GRADING INFORMATION

Polish **EXCELLENT**

Symmetry **EXCELLENT**

Fluorescence **NONE**

Inscription(s) **IGI LG775633727**

Comments: This Laboratory Grown Diamond was created by Chemical Vapor Deposition (CVD) growth process.



IGI



February 20, 2026
IGI Report No LG775633727
CUT CORNERED RECT. MODIFIED BRILLIANT
10.71 X 7.15 X 5.07 MM
3.57 CARATS
FANCY INTENSE YELLOW
VS 1
70.9%
62%
Thick
Pointed
EXCELLENT
EXCELLENT
NONE
IGI LG775633727
Comments: This Laboratory Grown Diamond was created by Chemical Vapor Deposition (CVD) growth process.